

1.

6th AHEAD GLTFCA Working Group Meeting 9-10 March 2006

*Sustainable Development and Natural Resource Management in Southern Zimbabwe*

Review of the establishment of the Sengwe Corridor as part of the GLTFP/TFCA

Giuseppe Daconto

• Beitbridge Rural District Council  
• Chiredzi Rural District Council  
• Chipinge Rural District Council



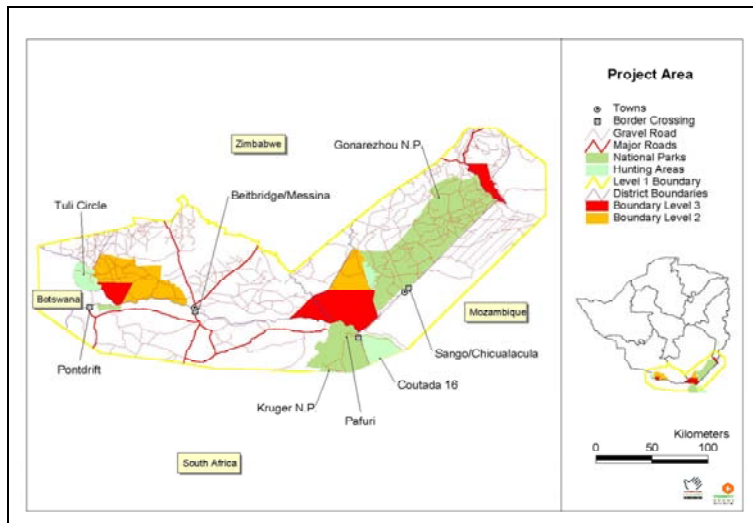
2.

## Outline

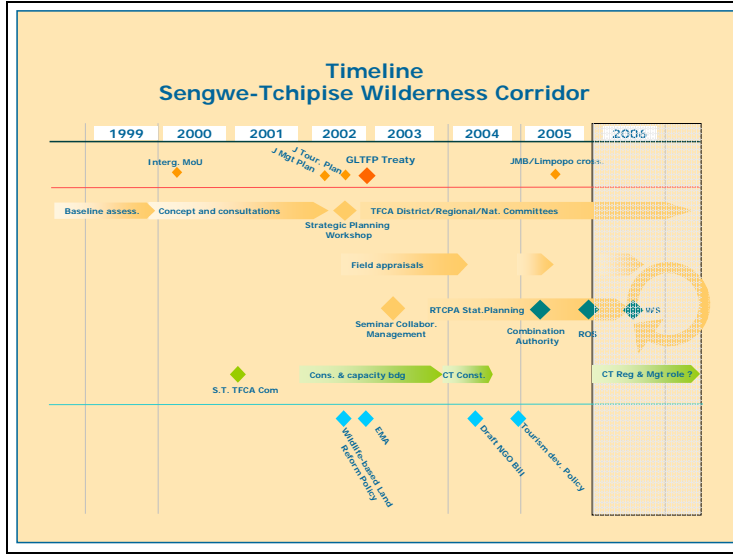
- Corridor planning process
- Selected local scale NRM issues
- Regional context: south east lowveld /TFCA
- Emerging questions

9-10 March 06

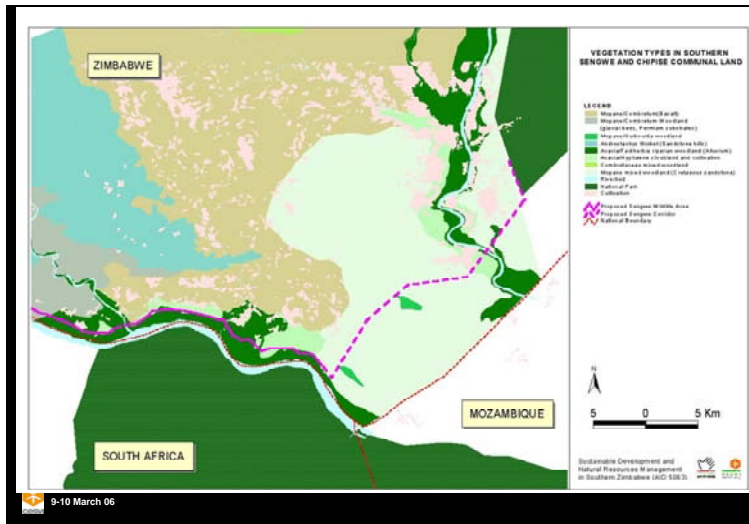
3.



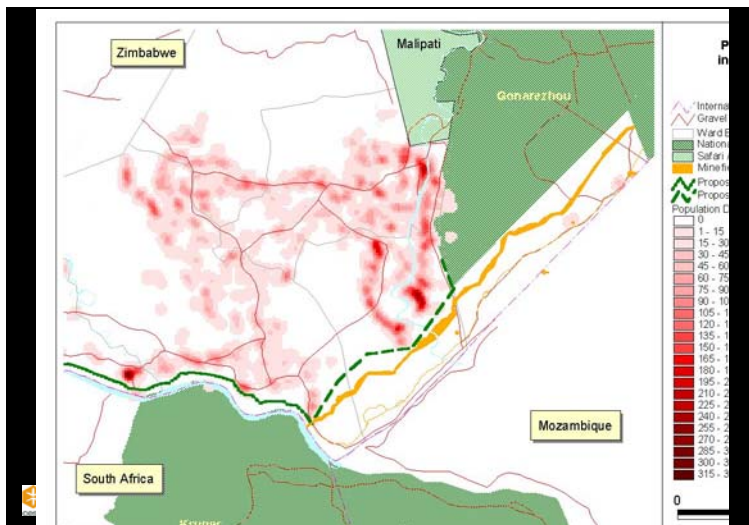
4.



5.




6.



7.

## Objectives of the Local Plan


1. To ensure compliance with international treaty obligations and the overall conservation objectives of the GLTFP
2. To enable a physical linkage in the form of a conservation corridor between the Gonarezhou National Park and the Kruger National Park to enable:
  - Wildlife habitats and movement between the two national parks
  - Tourist flows and associated development linked to the corridor and overall development of the GLTFP
  - Regional economic development
3. To provide opportunities for local communities to manage and derive benefits from the natural resources to be conserved in the proposed wilderness corridor.

 9-10 March 06

8.

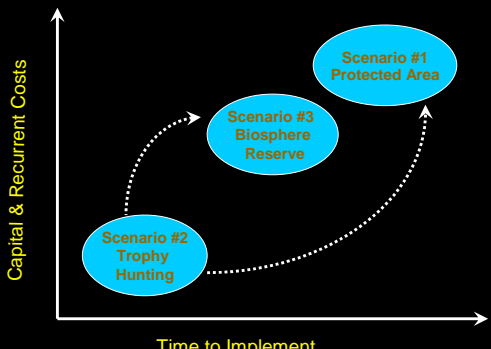
## PRA 2003: Management of the corridor

- Strong preference for local ownership and control of corridor resources
- Aim to minimise potential negative impacts and to enhance potential positive impacts

 9-10 March 06

9.

## July 03: Corridor Management Scenarios




Capital & Recurrent Costs

Time to Implement

Scenario #1 Protected Area

Scenario #3 Biosphere Reserve


Scenario #2 Trophy Hunting

 9-10 March 06

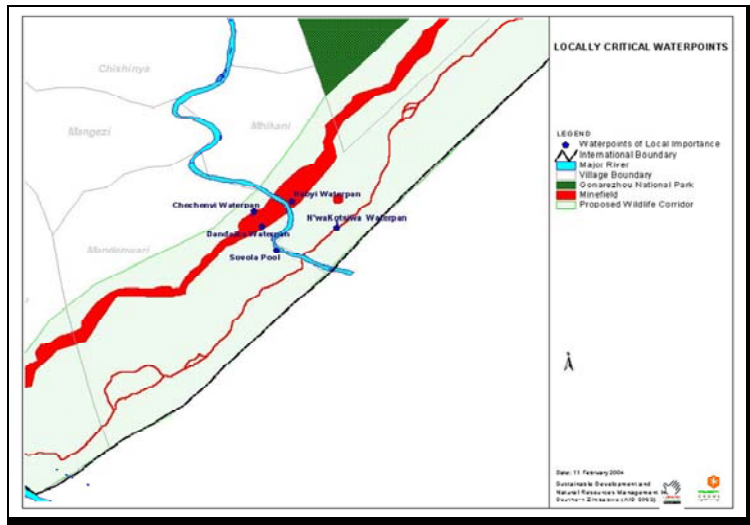
10.

## Water and agriculture

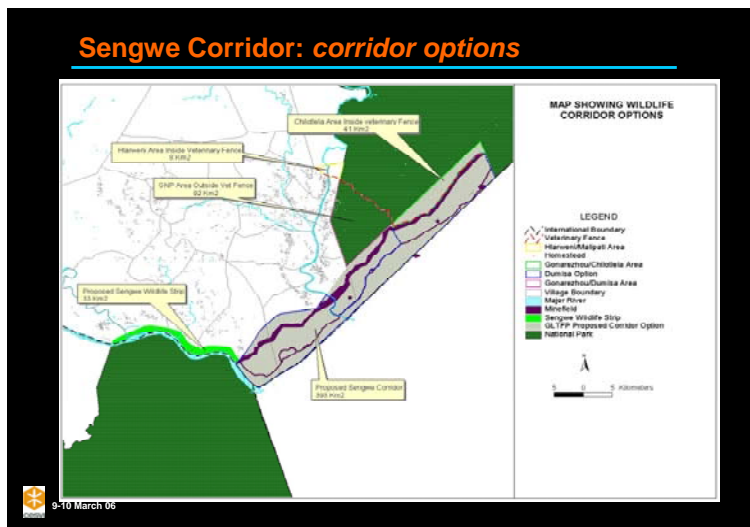
1. **Water for livestock along the Limpopo:**
  - > Fencing ?
  - > Reliable water points for livestock outside the corridor.
2. **Water for livestock in the Mwenezi floodplain (pans):**
  - > Fencing ?
  - > alternative water points need to be supplied outside the corridor area.
3. **Grazing for livestock in the Dumisa area /GNP:**
  - > Fencing ?
  - > Unacceptable reduction in grazing area
4. **Animal diseases (FMD, tryps, TB)**

 9-10 March 06

11.



12.



13.

## NRM mgt. & institutions

- **Local scale:**
  - Campfire
  - Community trusts (Malipati)
- **Regional scale:**
  - **State of regional planning:**
    - Tourism industry
    - Wildlife industry
    - Agriculture and rural development

✓ Devolution and local participation

✓ Gradual evolution and adaptation of NRM systems

9-10 March 06

14.

## Context: Zimbabwe in crisis

Figure 1: Wiping out 52 years of income growth

9-10 March 06

Clemens and Moss, 2005

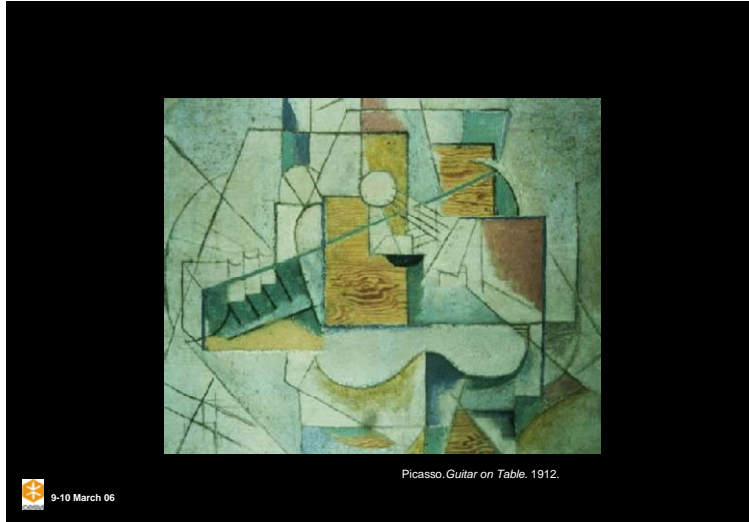
15.

## Wildlife and tourism industry is in a state of flux

9-10 March 06

SELCORE, 2004

16.



17.

### SEL Tourism Planning

Regional Stakeholder Workshop, April 2005

9-10 March 06

#### WHY HAVE PREVIOUS SEL TOURISM DEVELOPMENT PLANS FAILED?

- Finance**
  - Lack of financial resources
  - Lack of appraisals and costing
  - No agency responsible for sourcing funds
- Planning**
  - Poor interagency horizontal coordination
  - Lack of agreed plan with indicators and responsibilities
  - Poor process (few meetings, poor coordination, limited ownership and participation)
  - Unclear priorities and proliferation of initiatives
- Policy**
  - Lack of support at political and senior gov't levels
  - Lack of momentum and drivers
- Capacity**
  - Limited institutional capacities (continuity, technical inputs, etc.) at all levels
  - Lack of development partners
- Context**
  - National political, social and economic crisis
  - Collapse of the tourism industry
  - Crisis of credibility and expectations
  - Poor fundamentals for donor and private finance

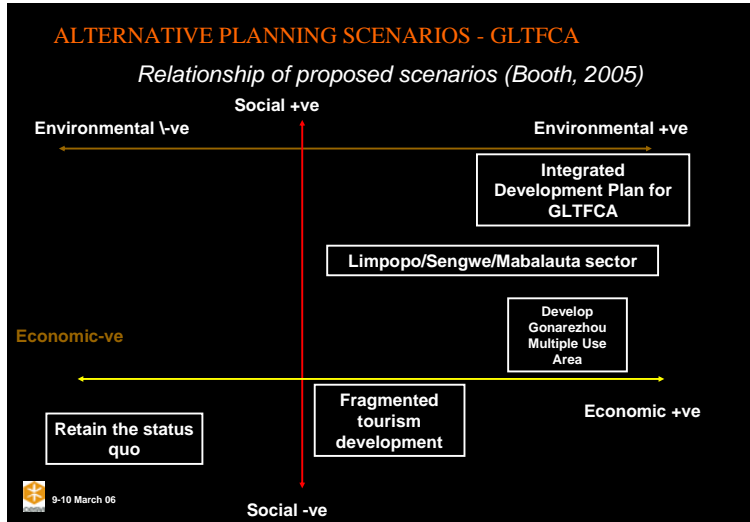
18.

### ALTERNATIVE PLANNING SCENARIOS - GLTFCA

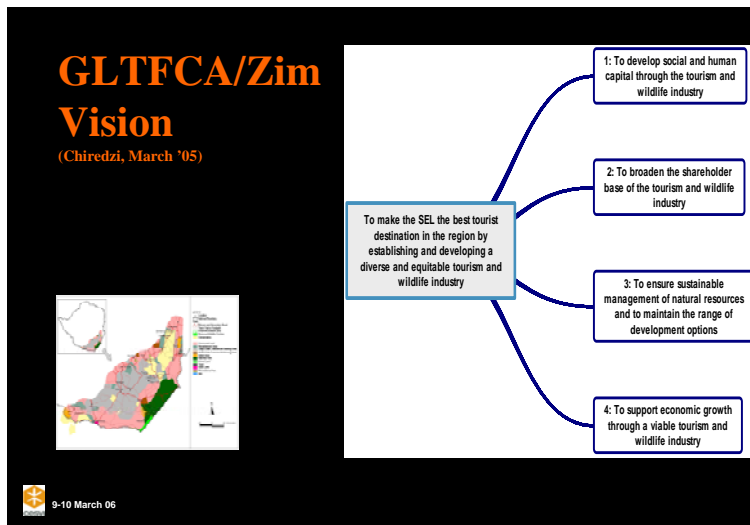
#### Possible Scenarios For Future Development

9-10 March 06

19.



20.




21.



22.

## GLTFCA: what ?




- Biological rationale for landscape connectivity
- Cross border NRM :
  - value added ?
  - livelihood ?
- Regional economic integration:
  - Rural economy & livelihood vs tourism: scenarios ?
  - Cross-border livestock ?
  - Impact on agropastoral system of
    - tourism ?
    - infrastructure ?
    - markets ?
    - wildlife mgt & disease control ?
    - evolution of governance systems ?
- Management model ?

9-10 March 06

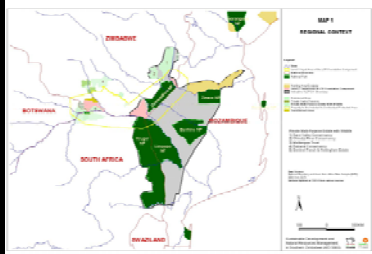
23.

## Limopo Transboundary Programme



Italian Ministry of Foreign Affairs

- IUCN/CESVI partnership



9-10 March 06