

THE LUBOMBO SPATIAL DEVELOPMENT INITIATIVE MALARIA CONTROL PROGRAMME



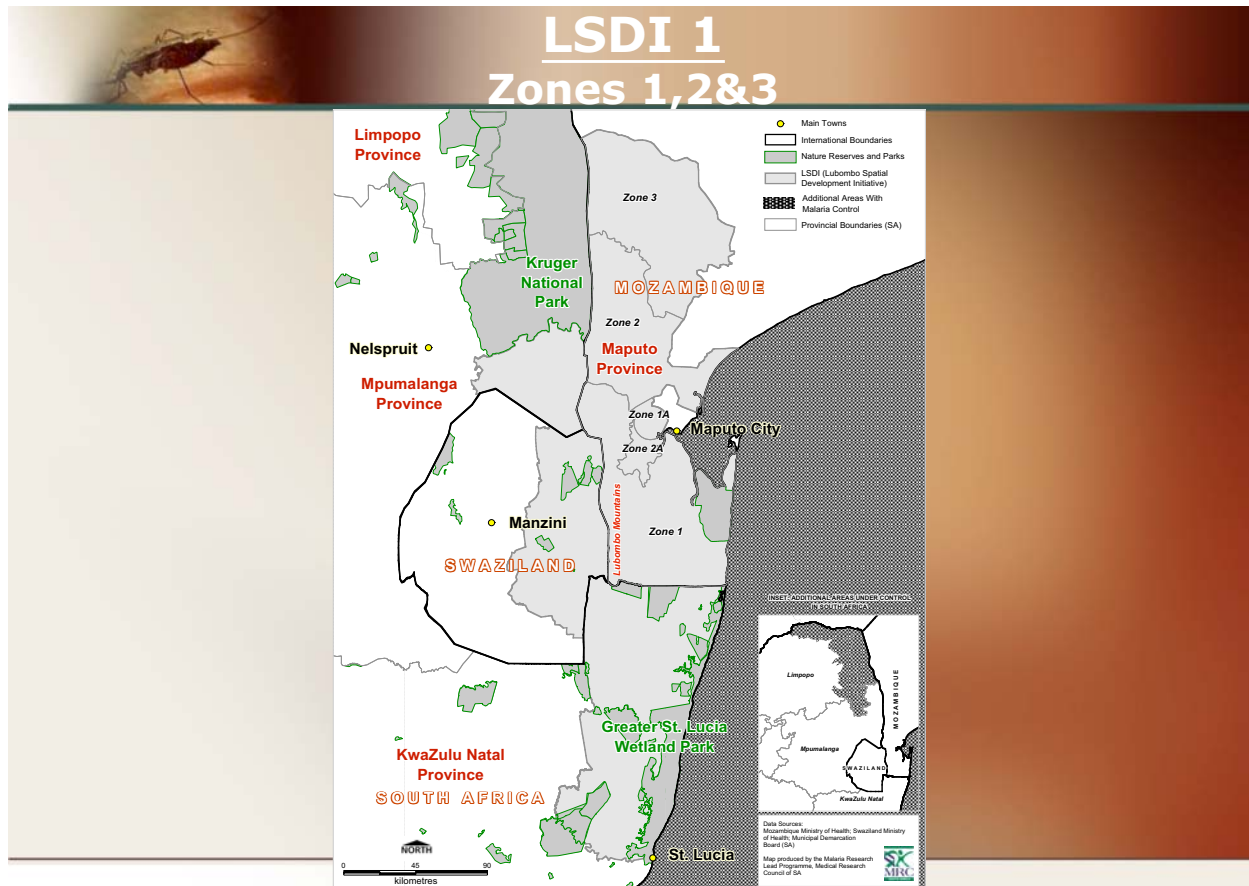
Background:



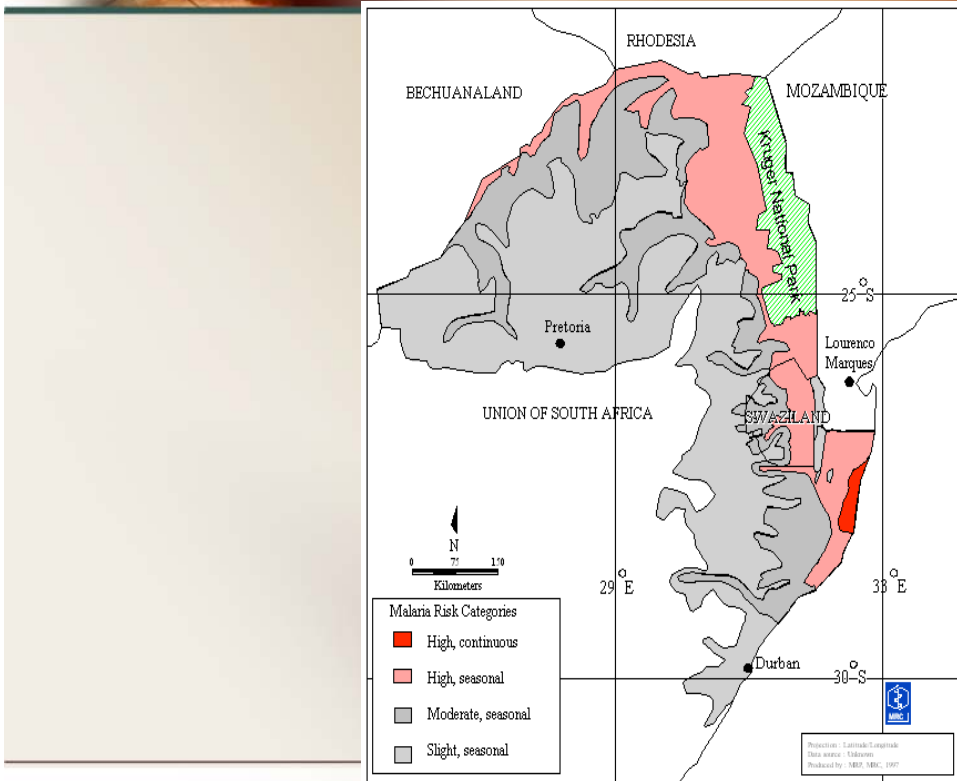
The Lubombo Spatial Development Initiative (LSDI) is a tri-lateral agreement by the governments of Mozambique, Swaziland and South Africa to develop the Lubombo region into a globally competitive economic zone

The geographic area targeted by this initiative is broadly defined as eastern Swaziland, southern Mozambique and north-eastern KwaZulu-Natal

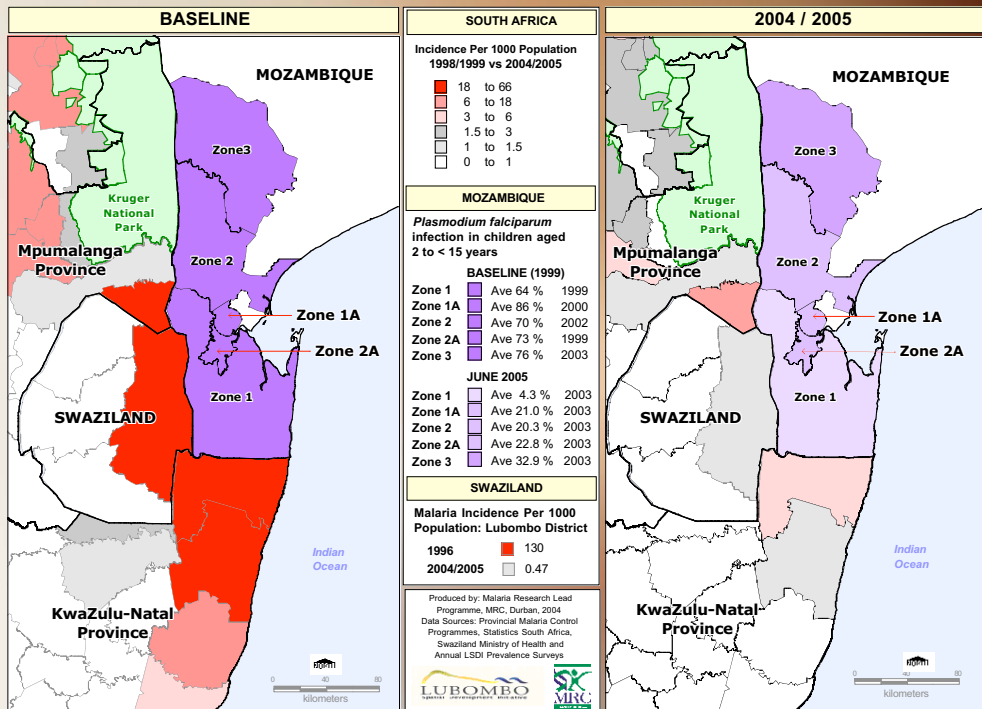
The Lubombo Spatial Development Initiative is aimed at accelerated development in regards to agriculture and tourism in the area spanning the three countries



Malaria risk in 1938

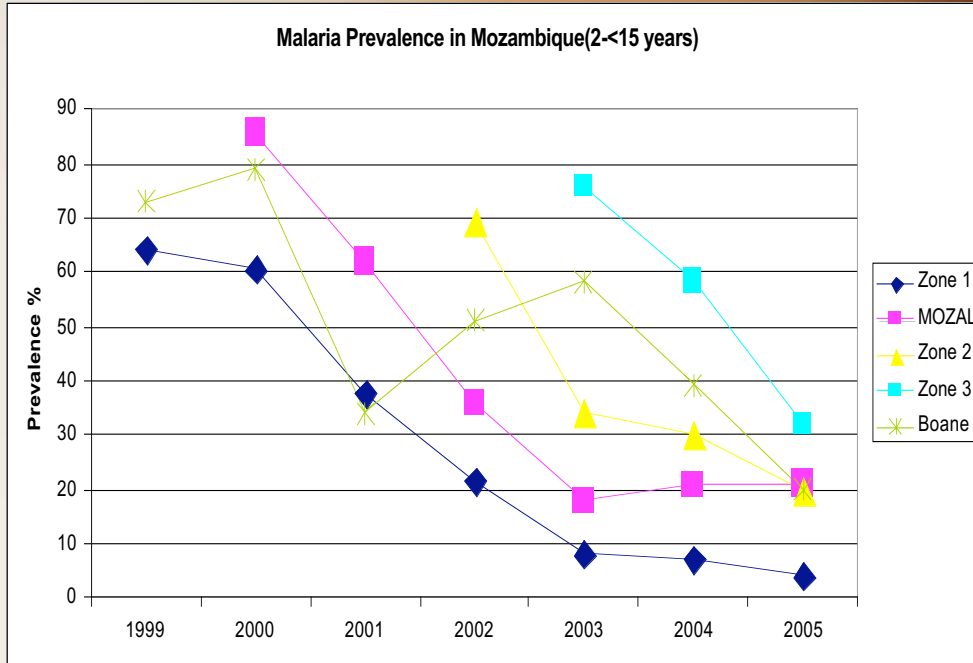


Regional Malaria Reduction

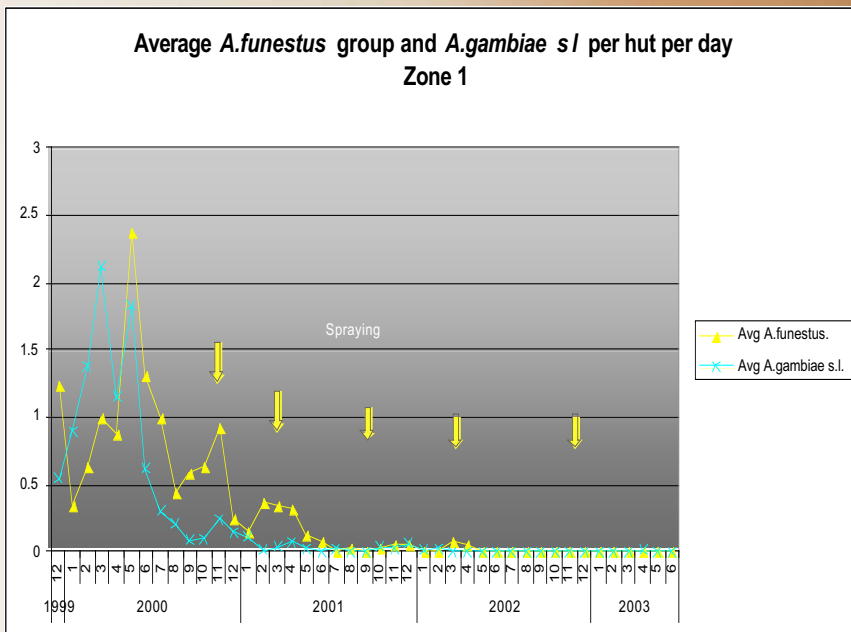


Population protected 4.7M, Structures sprayed 1.8M, contiguous control area 100,000 km²

Prevalence Reductions in Mozambique



Window trap collection data Zone 1 Mozambique

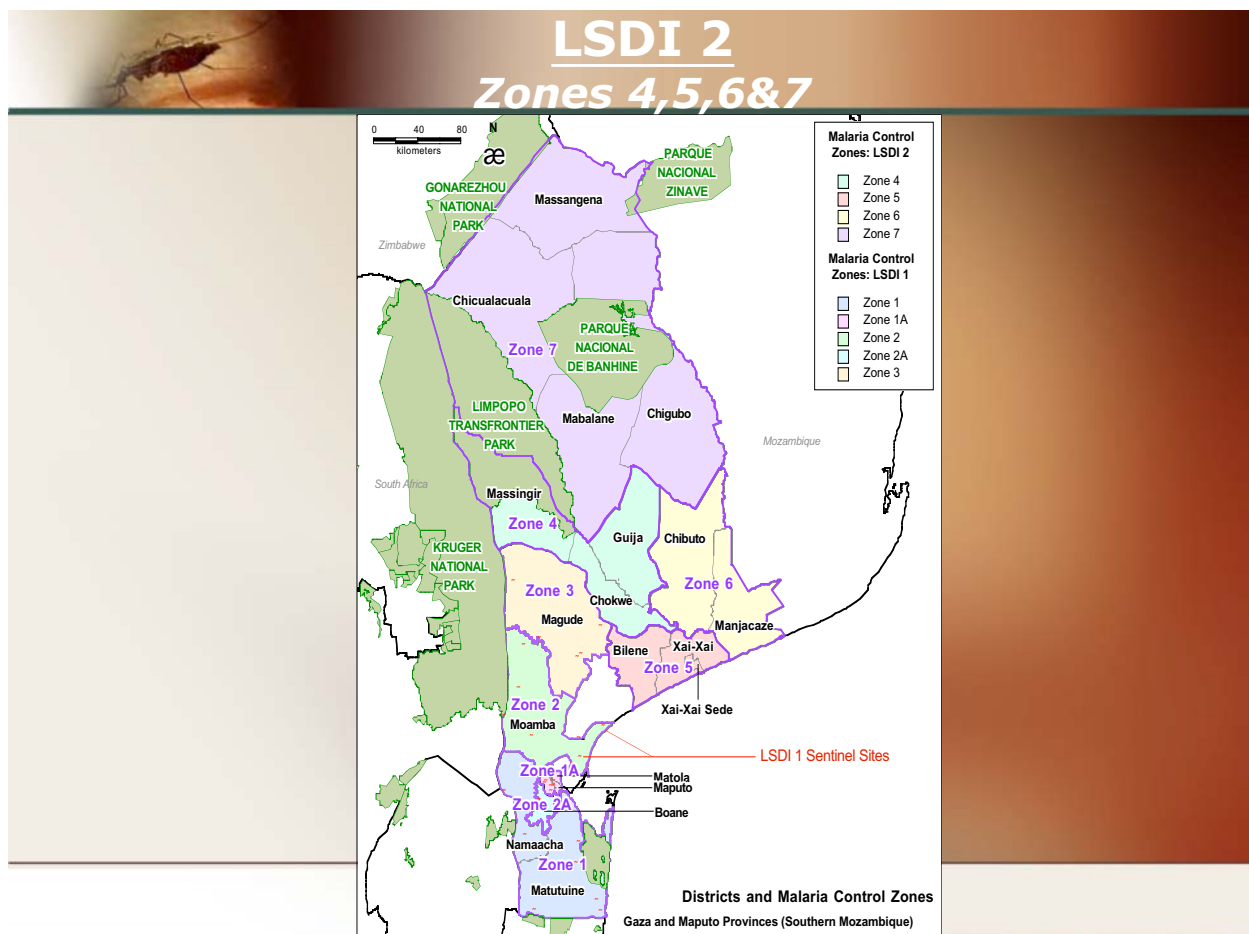


134 community based traps at 34 localities



LSDI Malaria Objectives

1. To reduce malaria incidence in the border areas of South Africa and Swaziland from 250 per 1000 to less than 20 per 1000 - **Done**
2. To reduce malaria infections from 625 per 1000 to less than 200 per 1000 within three year after the start of IRS in Maputo Province in Zone 1 - **Done**
3. To provide updated tourist information booklets containing definitive malaria risk maps and prophylaxis guideline - **Done**
4. To develop a regional malaria control programme - **Done**
5. To develop a regional GIS based malaria information system - **Done**
6. To implement effective treatment and definitive diagnosis SA and Zone 1 - **Done**



Importance of Intercountry Collaboration



- Collaboration ensures shared resources and expertise
- Intercountry collaboration promotes local solutions for local problems (NEPAD)
- Raise funds at a regional level
- Standardise control measures across national boundaries
- Enable effective monitoring, evaluation, planning and training

THIS IS
Ann



she's dying to *meet* you.

Her full name is
Anopheles Mosquito
and her trade is dishing
out *Malaria*
She's at home in Africa,
the Caribbean, India,
the South and Southwest
Pacific and other Hot Spots.

FIGURE 10.—Cover and opening page of booklet explaining the facts about malaria and individual measures of prevention.

