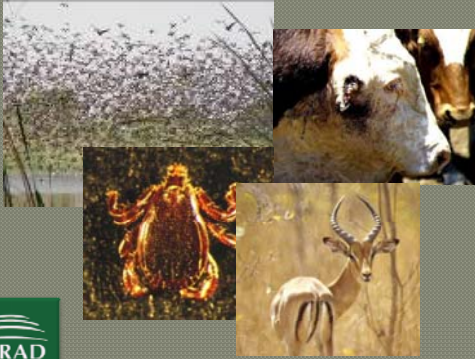


South-East Lowveld wildlife and domestic animal health projects and CIRAD: an update



M. de Garine-Wichatitsky
A. Caron



AHEAD Meeting, 5-7 Mars 2008, White River, South Africa



CIRAD Lowveld Livestock Project

A. Caron



AHEAD-GLTFCA Working Group Meeting, 8th-9th of Mars 2007, Pequenos Libombos Dam, Mozambique



CLLP Short Term Perspectives

- Complete one year of data collection (questionnaires) Completed - Replication
- Start PRA techniques (group discussions) On-going
- Establish disease surveillance cattle/wild (→ Msc Projects?) On-going
- Develop a better mapping of wildlife distribution? Done & On-going



CLLP Long Term Perspectives (2)

- FAO co-funding? Not yet
 - Another AHC
 - Develop disease surveillance?
- EU opportunities? (EU/PARSEL with WWF, Save, Malilangwe) Completed
- Regional perspective – GLTFCA – Uni. Of Pretoria – Mozambican partners Starting with CORUS

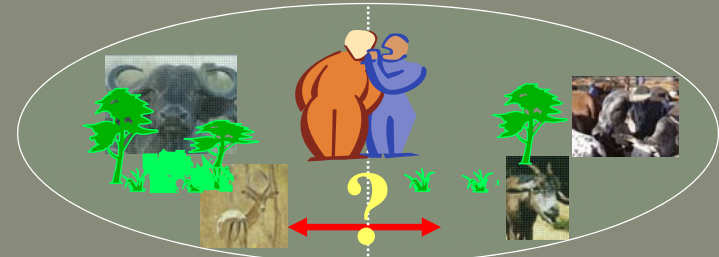


Global Framework

- Research Platform « Production and Conservation in Partnership » RP-PCP
- 4 scientific partners:
UZ, NUST, CNRS, CIRAD
- Associated partners/beneficiaries:
PWMA, Zim. Vet Services, local communities
- 2007-2008: 4 PhD students and 12 Masters

Global Objective

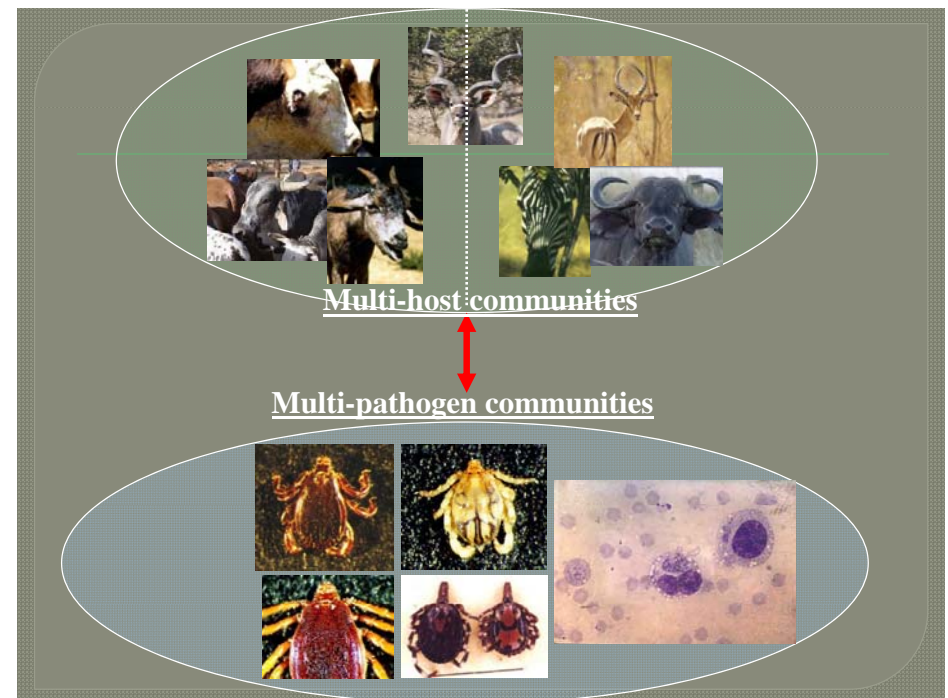
- Research and management of wild-domestic interfaces



- 4 thematic fields: Ecology, Governance and natural resources, Conservation Agriculture & Animal Health

Animal Health Petal research objectives

- Better understanding of pathogens dynamics and their determinants at the wildlife/livestock interface (emphasis on communities of hosts/communities of pathogens)
- Improve livelihoods of communities relying on wildlife and livestock productions or use.



Population prevalence for pathogens

Comparison 3 sites:

1) Malipati-Pesvi Site

→ Integrated interface

2) Chisvirisvi Site

→ Fenced interface

3) Boli Site

→ Limited interface



Data needed

- Ecology of host community
- Prevalence of pathogens in host populations
- Mobility/contacts of hosts populations

Ecology of host community

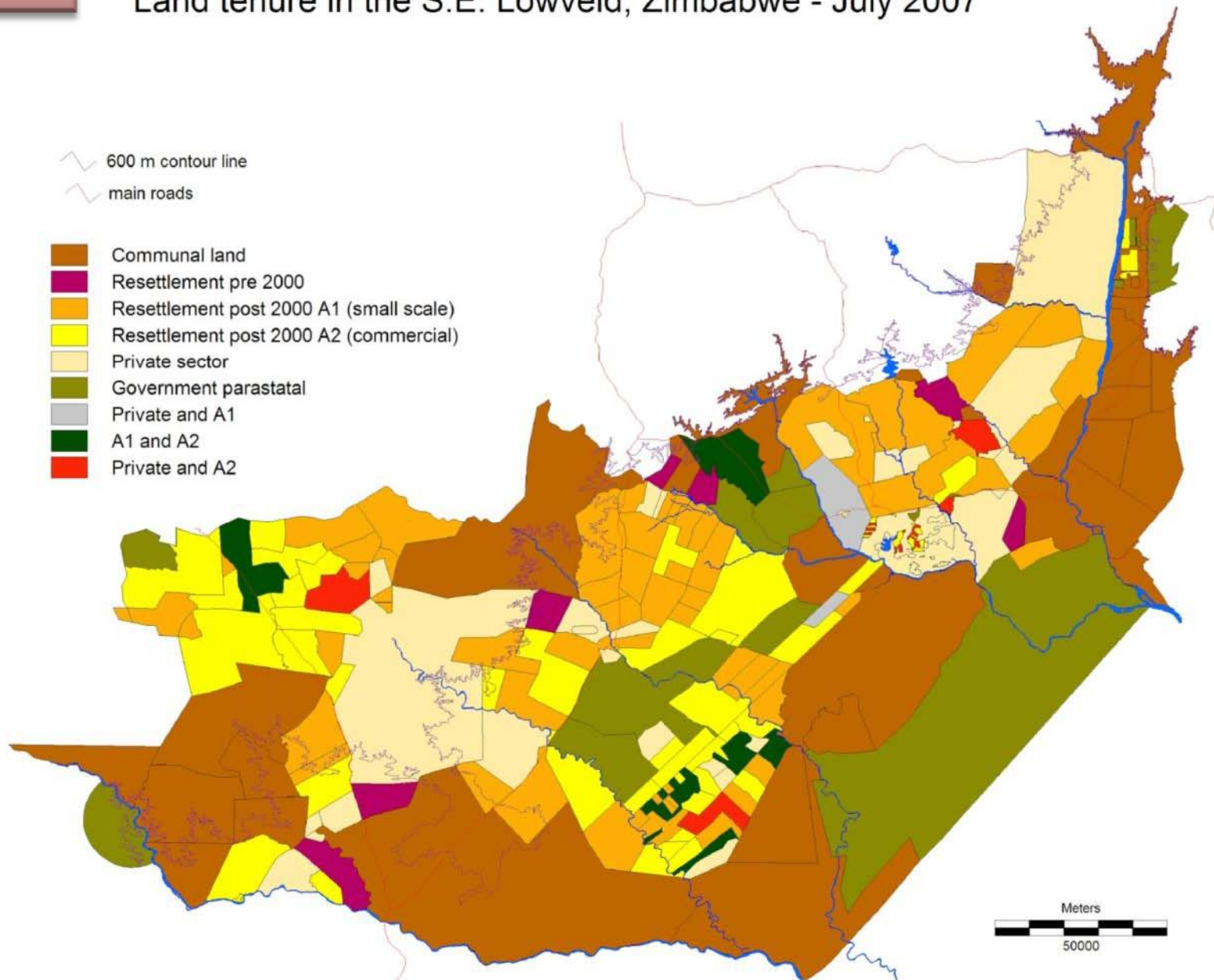
- CLWP: CIRAD Lowveld Wildlife Project; CIRAD-SELCORE-Malilangwe GIS unit

Completed

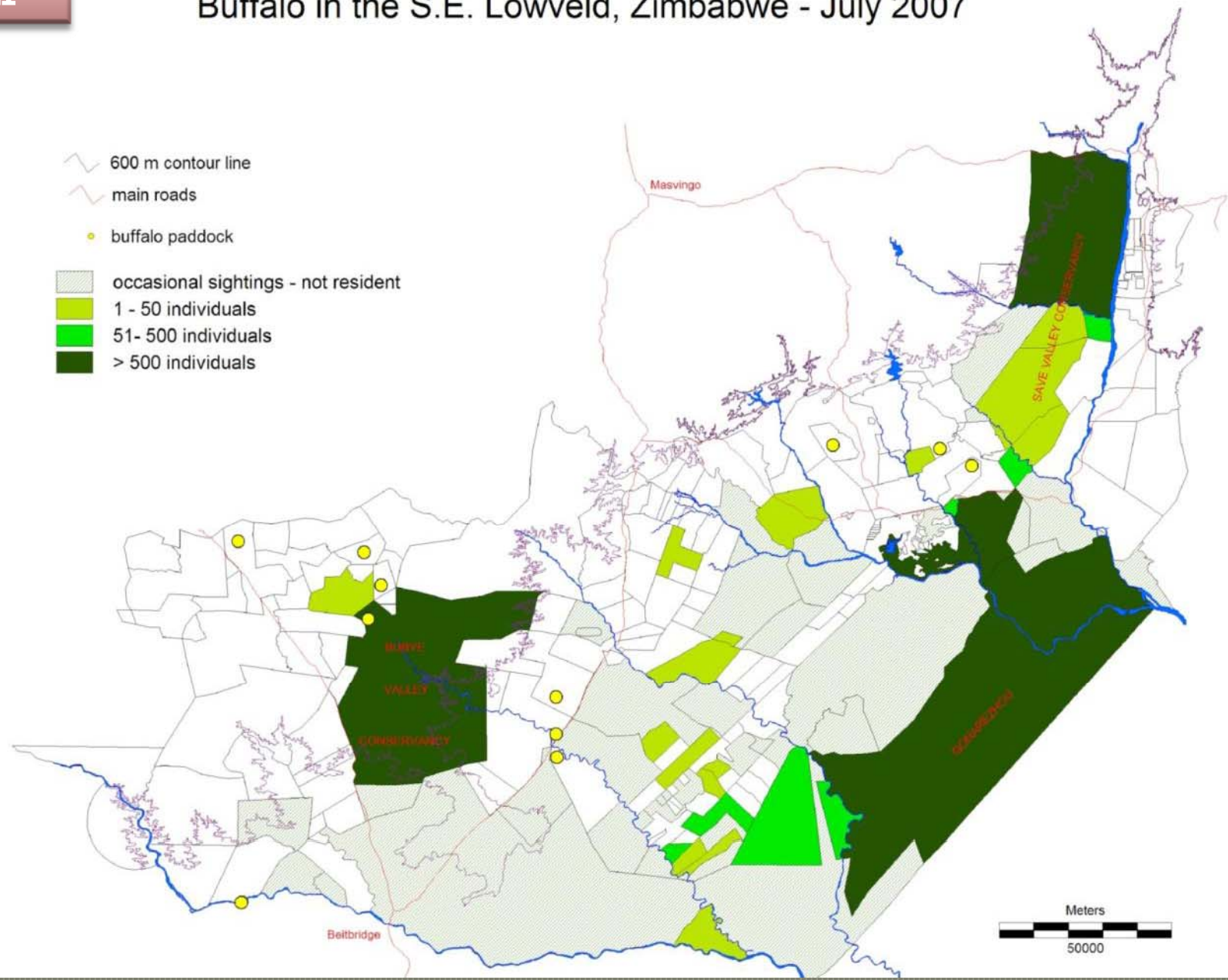
- Patterns of productivity in the GLTFCA: UZ, CNRS, CIRAD

Start April 2008

Land tenure in the S.E. Lowveld, Zimbabwe - July 2007



Buffalo in the S.E. Lowveld, Zimbabwe - July 2007



Ecology of host community

- Road Counts of livestock and wildlife at the interface Started Feb. 2008
- Monitoring of selected water points Started Feb. 2008
- Aerial survey of the Sengwe Communal Land + Southern Gonarezhou + Mateke Hills Planned in Sept. 2008?

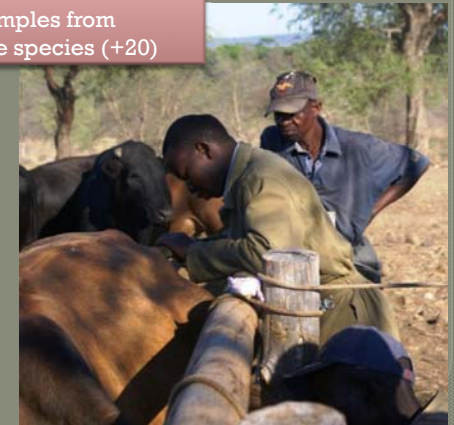


Prevalence of pathogens

Diseases:

- FMD
- bTB
- Brucellosis
- Tick-borne diseases
- RVF?
- PPR?

2007-Beginning of 2008:
- 650 samples collected from livestock
- 20 samples from wildlife species (+20)



Prevalence of pathogens

3 Masters on-going:

- Master on Zoonosis - UZ
 - bTB / Brucellosis
- Master on Ticks & Tick-borne diseases - UZ
- Master on FMD – UP - UZ
 - CORUS Student

Mobility of hosts populations

- 10 GPS-VHF transmitters used for cattle mobility / Master UZ/GeoES April 2008
- 10 GPS-VHF transmitters used for buffalo mobility June-Sept. 2008
- In Malipati and Pesvi Area?
- In collaboration with project using the same protocol in the park W in Niger / Burkina / Benin

Expected outputs

- Hosts-Pathogens Community Interactions Environment
- Increased disease surveillance in the SE Lowveld Economy?
- Improved farmers livelihoods in the area through a better management of diseases Social and economic situation
- Participate to a better management of natural resources in the periphery of protected areas SEE
- Training of technical and academic Zimbabwean staff Economy?

Thank you

