

South Africa/Mozambique Collaboration on Animal Disease Surveys: Progress Update

Peter Buss, Markus Hofmeyr, Lin-Mari de Klerk, Nazare Mangueze, Carlos Lopez Pereira, Roy Bengis, Louis van Schalkwyk, Danny Govender

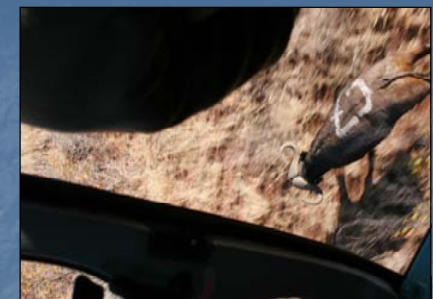
2007 BTB Prevalence Survey

- Prevalence survey conducted in Shingwedzi River catchment in KNP extending in LNP



BTB survey 2007 Shingwedzi River Catchment					
Date	Herd name & ID	Approx. Herd size	Total no. sampled	Male	Female
16/07/07	Dzombo	700	48	13	35
17/07/07	Bububu	250	18	8	10
19/07/07	Shingomeni	400	28	13	15
19/07/07	Langtoon dam	400	23	10	13
19/07/07	Gaza airstrip, Mozambique	70	5	1	4
20/07/07	Nyunyani (Shitangeni herd)	170	13	5	8
23/07/07	Boyela	400	29	7	22
24/07/07	Malahlapanga	200	14	5	9
24/07/07	Mpongolo	400	28	7	21
25/07/07	Boomplaas (Zari)	250	14	3	11
25/07/07	25/07/07	130	9	2	7
		1730	229	74	155

Gamma test positive	Histo	Culture	Status
3 yr female	Neg	Pos	Pos
7 - 8 yr female	Pos	Pos	Pos
4.5 yr male	Neg	Neg	Neg
10 yr female	Neg	Neg	Neg
8 yr female	N/S	Neg	Neg
2 yr female	Pos	Pos	Pos
6 yr female	Pos	Pos	Pos
9 yr male	Pos	Pos	Pos
8 yr female	Pos	Pos	Pos
3 yr female	Neg	Neg	Neg
10			6



- Shingwedzi River Catchment

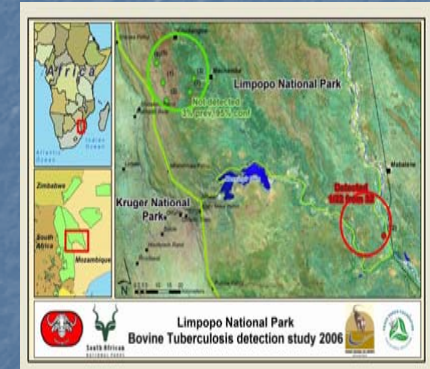
- Zonal Prevalence 1.72% to 7.01% (95% confidence interval), Mean = 4.37%

- Limpopo River Catchment

- Zonal Prevalence 1.00 to 4.20%, Mean = 1.9%

Mabalane buffalo

- October 2006, 22 buffalo (30 – 35) were test for BTB (Gamma interferon)
- A single adult female tested positive
- Necropsied – histopathology and culture negative

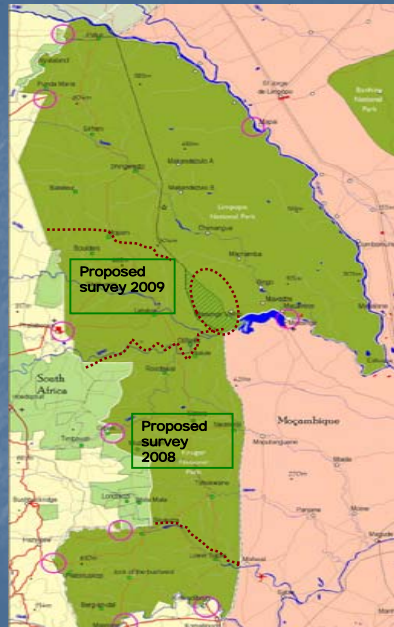


- 2007
- VWS assisted with capture of these buffalo and translocation to Gorongosa NP
- 31 animals capture (mass and chemical)



2007/2008

- BTB prevalence survey proposed for KNP – detection survey for LNP



- BTB detection survey in Zimbabwe
- First proposed in 2006
- Lack of resources and capacity
- Depending on funding – southern portion of Gonarezhou

- Proposed survey of diseases in domestic dogs in Limpopo National Park
- Initial discussion with Nazarer, Madyo and Roy (Prof Van Vuuren)
- Concept (still being developed)
 - Survey of domestic dogs in LNP
 - Diseases including Distemper, Parvo and Leptospirosis & Rabies (?)
 - Serological survey of carnivores for distemper in KNP – project proposal for 2008

Collaborators

- Peace Parks Foundation.
- Department of Agriculture, South Africa.
- Veterinary Wildlife Unit, Division of Livestock and Veterinary Services, Ministry of Agriculture, Zimbabwe.
- National Directorate of Conservation Areas, Ministry of Tourism, Mozambique.
- National Directorate of Veterinary Services, Mozambique.
- Onderstepoort Veterinary Institute, South Africa.