



Great Limpopo Transfrontier Park

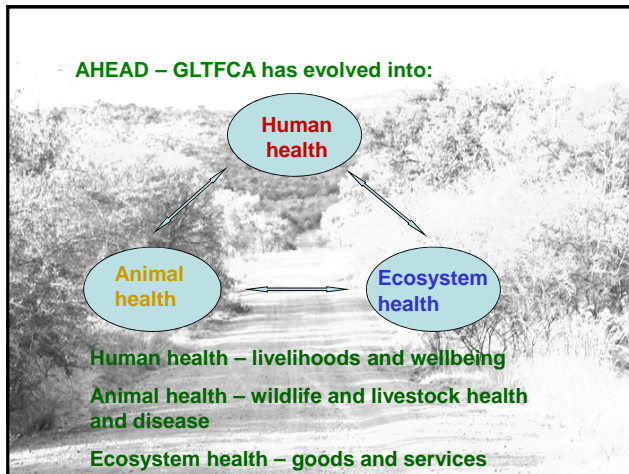
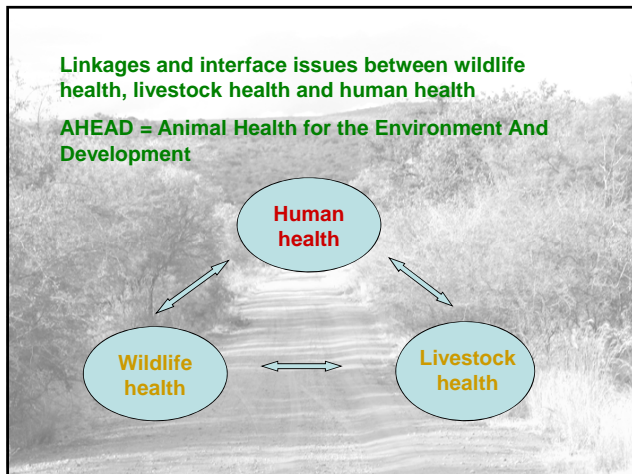
**AHEAD – GLTFCA programme launched in 2003 at WPC**

**Mixed group of people – vets, economists, ecologists, conservationists etc**

**From Sn Africa, E Africa, Europe, USA**

**Several working groups present**

**GLTFCA identified as priority area due to size, population and local history**



Overall objective of the AHEAD – GLTFCA programme:

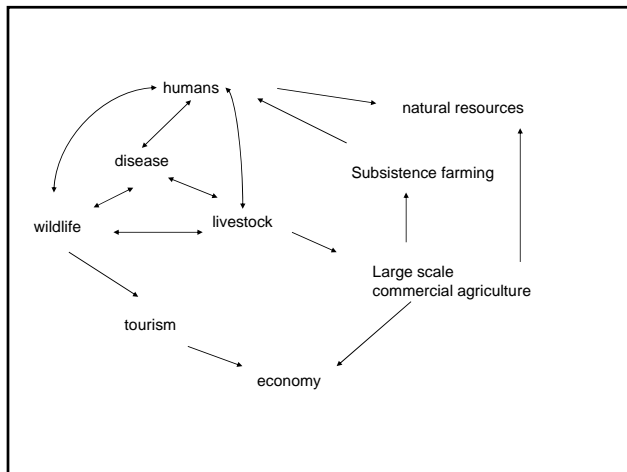
Facilitate development and conservation success thro' integrated understanding based on innovative, inter-disciplinary applied research, monitoring and surveillance at the interface between wild and domestic animal health, ecosystem goods and services and human livelihoods and wellbeing.

- CONCEPTUAL FRAMEWORK DOCUMENT
- Cumming et al.2006
- Themes:
1. An overarching conceptual framework to facilitate integrated understanding through interdisciplinary approaches
  2. Animal health and disease (6 modules)
  3. Land use, ecosystem goods and services, and animal health (5 modules)
  4. Human livelihoods, animal and ecosystem health (4 modules)
  5. Policy support and capacity building at local, national and regional levels (3 modules)
  6. Communications and outreach (6 modules)

## As Fences Come Down

Conceptual Framework directed at researchers

New document: less technical, more readable – funders, lay public, quick overview



WILDLIFE	LIVESTOCK	HUMAN RELATED
bTB	FMD	bTB
Anthrax	Theileriosis	Anthrax
Rabies	bTB, ASF	Rabies
RVF	Anthrax, Brucella	echinococcus
(?distemper)	Nagana	Neospora/Toxo
	RVF	RVF

Kock 2007

**HUMAN PUBLIC HEALTH CHALLENGES IN THE GLTFCA**

**Infectious disease:**  
 HIV/AIDS (SIDA Park)  
 MALARIA  
 TUBERCULOSIS (m tuberculosis)  
 Rabies  
 Cholera  
 Diarrhoeal disease  
 ARI  
 Measles

**Non-infectious disease:**  
 PEM

**Other:**  
 Education  
 Food security  
 Public health facilities  
 Water & sanitation  
 Infrastructure

photo: M Kock





**Impact of:**

- Land use and human livelihoods
- Ecotourism
- Resettlement
- Use of natural resources
- Animal disease and zoonoses
- Emerging infectious diseases
- Fencing
- Domestic animal stocking rates
- Encroachment of territory
- Human wildlife contact/conflict etc



**New concept: "One Health"**

**New questions:**  
Are the conservation methods and goals of 50 / 100 years ago still relevant...?  
"Are PAs still relevant in a world of rapid global change?"

EE Hoeflich 2008

**New paradigm:**  
"healthy people [with healthy livestock] are more likely to support conservation initiatives and be good environmental stewards"

M Kock 2007



**ONE HEALTH**

Barcelona  
Cape Town  
Bellagio



AHEAD is network based

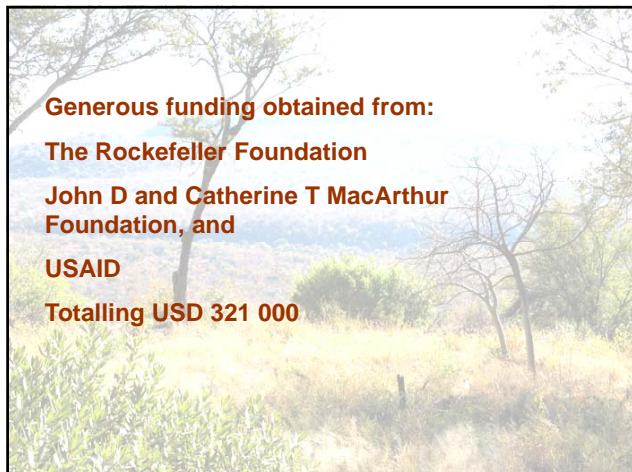
300 members in database

LoU with 20 organisations incl: WCS, UC Berkeley, DNAC, WWF-SARPO, DVS-Zw, OVI, EWT, TPARI etc

8 Working Group meetings since 2003

Smaller core group meetings inbetween





Total money available for seed grants:

Leveraged an additional USD 202 000

**Over USD 500 000 !!**

To be invested in work in the GLTFCA

**10 seed grants of USD 50 000 each**

**Objectives**  
**9<sup>th</sup> AHEAD – GLTFCA Working Group Meeting**  
**What can you do for AHEAD?**  
**What can AHEAD do for you?**

**Objectives 2009**

- Review Conceptual Framework & Projects Table**
- Reset goals and direction**
- Revise how to sustain AHEAD-GLTFCA !**

