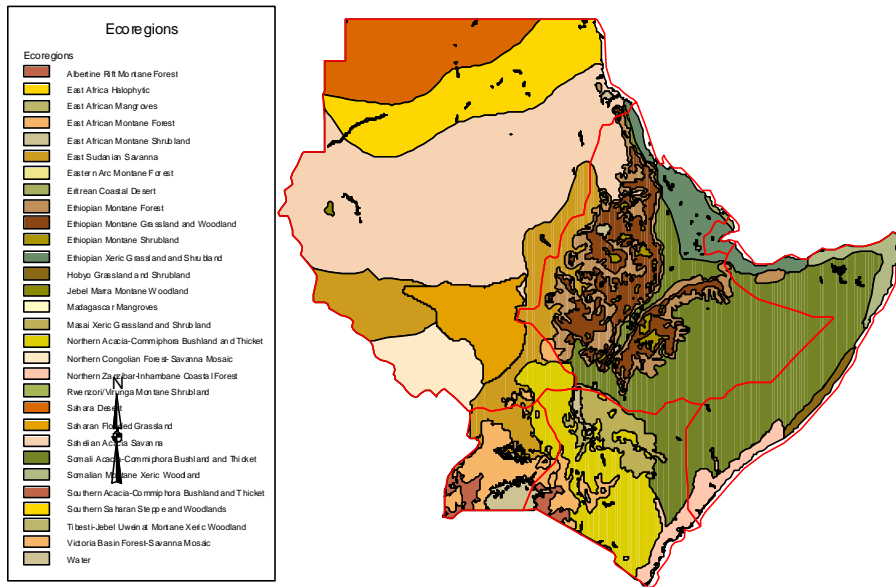


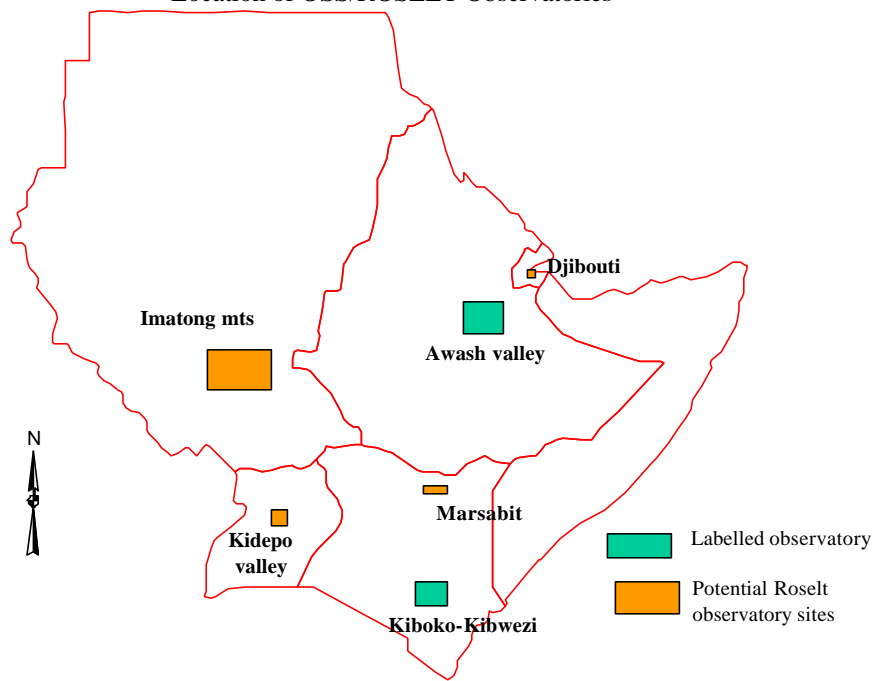
IGAD Countries (OSS Sub-region)



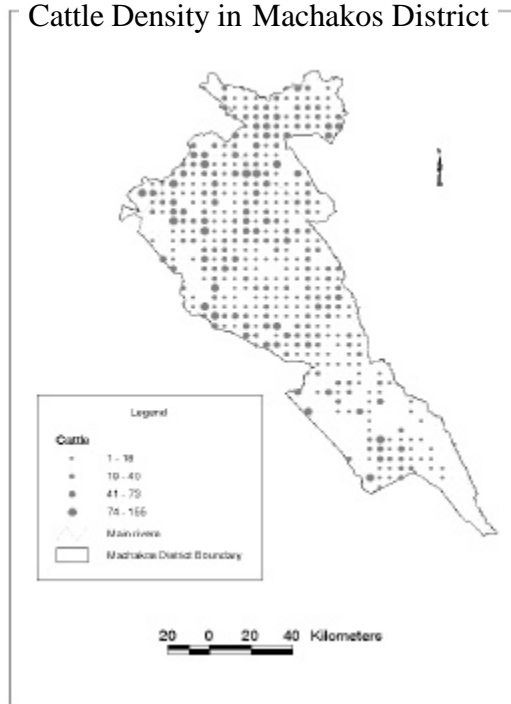
IGAD Eco-regions

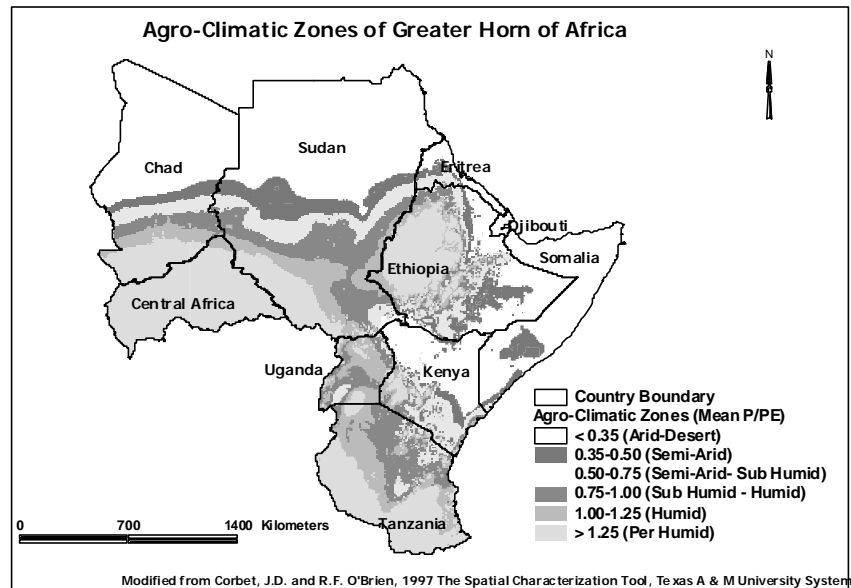
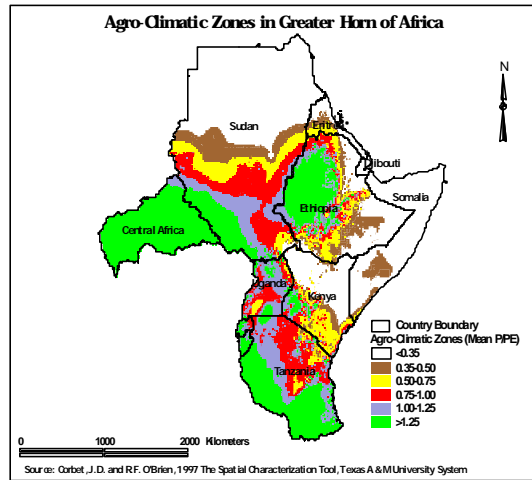


Location of OSS/ROSELT Observatories



Cattle Density in Machakos District





Phase I of ROSELT in Eastern Africa: 1993- 1996

- **Identification of Potential Candidate Territories in Eastern Africa**

Eastern Africa Sub-regional workshop held in March 1993

List of Participants to the First ROSELT Workshop in 1993

Dr. J T. Njoka J. Kenya (convenor)- (DRM), UON	Dr. J. C. Ngethe Kenya- DRM, UON
Dr. B.M. Woie Kenya- Director, KARI Marsabit Station	Dr. K.R. Musimba Kenya- DRM, UON
Mr. H.A. Mwendwa Kenya – DRSRS	Mr. C. Kara Sudan - East African Environmental Network.
Mr. D.M. Kirori Kenya- Ministry of ASAL	Mr. C. Sebukeera- Uganda
	Mr. D.R. Mutekanga Uganda- East African wildlife Society.

Sudan : Proposed PCT

- Imatoong Mountains- proposed National park in Southern Sudan
- Dinder national Park in Northern Sudan
- Nimule national park

Uganda Proposed sites.

- Uganda Institute of Ecology – in charge of monitoring National Parks
- Hydromet for Lake regional site
- Kawanda Agriculture Research Station- Makerere University

Kenya Proposed sites

- Marsabit –Mt Kulal area for Northern Rangelands in Kenya
- Kiboko Kibwezi Area for agropastoral research and teaching.

Ethiopia PCT

- Awash River Valley -some 80,000ha of which 3,000 ha are zoned for irrigation
- Gewane Area -introduction and management of threatened species of palm trees is showing good results. This an area where the Afar pastoralists are settling down to farm maize and vegetables
- Highly cultivated area expanding from 1200m to 1700m of altitude and located 40km west of Gewane.

Issues/resolutions raised in the Rabat Workshop in 1994

1. National and regional commitments from member countries is needed by June 1994.
2. The selection PCTs to reflect scientific value and logistical capacity for long term monitoring.
3. ROSELT must be relevant to the development problems in the region.
4. Participation by all countries in S.S.O region in ROSELT activities is essential and linkages/collaboration with similar programmes is recommended.

Issues/resolutions raised in the Rabat Workshop in 1994 Cont..

5. S.S.O. is not a donor but fund raiser from financial partners
6. ROSELT/O.S.S. to be operational by 1996.
7. Each member state of S.S.O to inscribe ROSELT in the national policy and Action Plan on the environment.
8. The management and analysis of data at national level requires a protocol supported by member state.

Issues/resolutions raised in the Rabat Workshop in 1994 Cont..

9. The High Quality of Scientific and technical content of ROSELT should be maintained.
110. Scientific and Technical Council of O.S.S. is mandated to grant S.S.O. label to PCTs which meet the required criteria.
11. ROSELT financial requirements demands a new strategy which will ensure financial sustainability for several decades.

SCIENTIFIC AND TECHNICAL CONTENT OF ROSELT

- ROSELT must be based on good scientific ideas. Appropriate methodologies with good sampling procedures.
- Above all reliable data from observatories should be compatible with other international data collection networks and projects

The criteria of ROSELT selection

- Type of land use patterns agricultural grazing or forest and experimentation sites.
- Areas under complete production to provide reference natural environment undisturbed the human activities
- Criteria of ecological representation of the sites

Labeling of PCT in three categories

- Criteria related to the ecological value of PCTs in ROSELT.
- Criteria related to the scientific capacity and experience to establish knowledge base for each PCT.
- Criteria related to the long-term operational capacity of responsible institutions working on the observation project,

Environmental Problems Relevant to the SSO Strategy.

1. The technological impacts on the environment.
2. Climatic variability.
3. Variability of the Resource base.
4. Loss of biological diversity.
5. Uses and maintenance of ecosystems, overgrazing, cultivation etc.
- 6 Desertification - vulnerability
- 7 Ecosystem integration in sustainable development strategy.

UNCCD Thematic Programme Networks

1. Ecological monitoring, Natural Resources mapping, remote sensing and early warning systems : African Organization on Cartography and Remote Sensing (OACT), based in Algiers (Algeria);
2. Promotion of Agroforestry and Soil Conservation in Africa. Institut du Sahel, CILSS, based in Bamako, Mali ;
- 3 Rational Use of Rangelands and Development of Fodder Crops in Africa Institutional Focal Point- AU/IBAR based in Nairobi, Kenya.
4. Integrated management of international river, lake and hydrogeological basins in Africa : SADC Water Sector Coordination Unit based in Maseru, Lesotho ;
5. Network Programme for the promotion of renewable energy sources and Ecotechnologies : the National Agency for Renewable Energy Sources based in Tunis jointly with ENDA, based in Dakar, Senegal;
6. The promotion of Sustainable Farming systems: the OAU Coordination Bureau of the Semi-Arid Food Grain Research and Development Project (SAFGRAD) based in Ouagadougou (Burkina Faso).

TPN3 : Rational use of rangelands

- **The overall objective of TPN3:**

To support rational management and improvement of rangeland resources for sustaining human livelihoods and the environment in socially equitable way and in conformity with the provisions of UNCCD framework.

TPN3 proposed programme areas

- 1. Sustainable pastoral livelihoods Programme
- 2. Rationalisation of rangeland utilisation through definition and legislation of land and natural resource tenure (Land Tenure and Land policy.)
- 3. Promoting rational use of rangelands through conflict transformation and community peacebuilding initiatives among the pastoralists and agro-pastoralists communities
- 4. Drought management and risk analysis.

TPN 3 Programme Areas- Cont...

- Analysis of livestock and environment protection
- Improving animal feed resources in the region
- Strengthening the pastoral economy through human resources capacity building in animal husbandry/range management, & fodder crop production
- Promotion of rational use of rangelands through application of appropriate range management practices.
- Research priorities (animal production/range management, management, and socio economic, political situational analysis
- Promotion of Trade in livestock and livestock products

Major constraints to rational use of rangelands in Eastern Africa

- Civil strife and lack of good governance
- Poverty
- Poor or no institutional frameworks
- Poor policies
- Property right and land tenure
- Technical and social issues
- Droughts and climatic irregularities
- Socio-economic and Health
- Encroachment of cropping areas into pasturelands
- Quantity and quality of fodder

The Role UNCCD National Focal Point in Relation to ROSELT

1. **ensure an increasing representation on the National Coordination Body (NCB)**
2. **ensure continuity and the process of partnership building with development partners.**
3. **coordination for coherent implementation of NAP** according to the spirit of an integrated programme
4. **Strive to integrate NAP into the development strategies such as the Poverty Reduction Strategy Paper (PRSP)**

The Role UNCCD NFP in Relation to ROSELT- Cont...

5. **Must intensify the collaboration with the focal points of the other relevant Conventions such as the Conventions on Climate Change, Biodiversity and Ramsar;**
6. **Sensitize all stakeholders including the private sector so that they effectively participate in the implementation of NAP.**
- **7. Initiate actions aimed at assisting stakeholders at the local level to assume their responsibilities within the framework of the implementation**