

# **Developing Producer Protocols & Lessons from Namibia's Zambezi Region**

9 November 2017

**Wildlife-Friendly Beef: Working Towards A Win-Win Solution for  
Livestock Agriculture & Wildlife Conservation in Ngamiland**

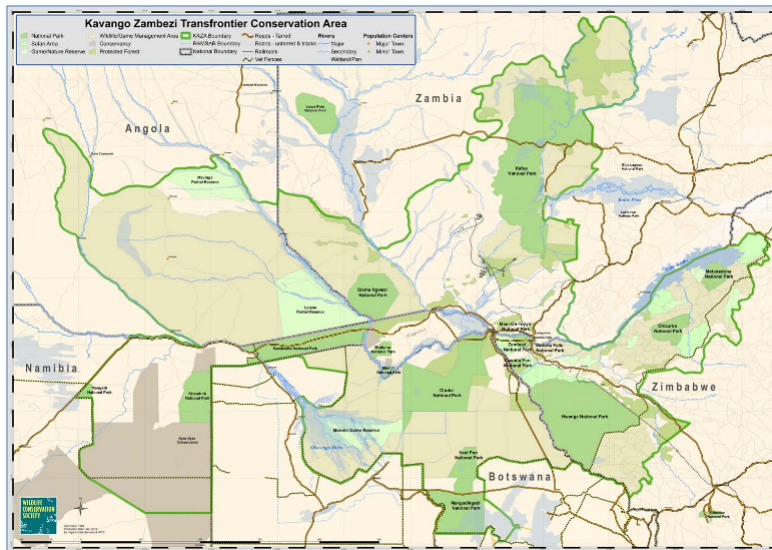


## **Overview**

- Background
- The project
- Rationale for a protocol
- The protocol
- Lessons learned

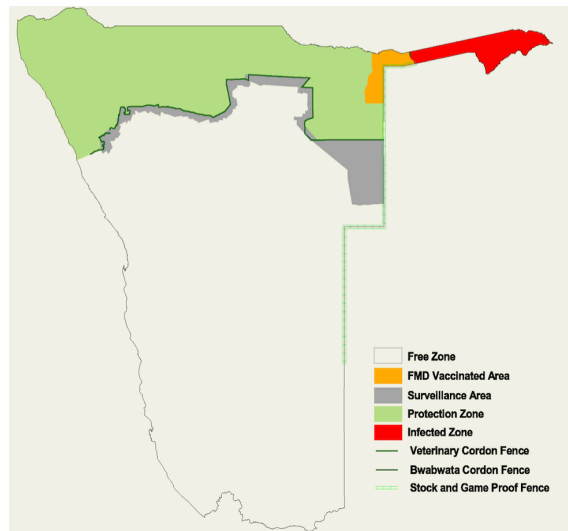


## Geography - KAZA



**SATOTO**  
LIVESTOCK PROJECTS

## FMD zoning



**SATOTO**  
LIVESTOCK PROJECTS

## Background

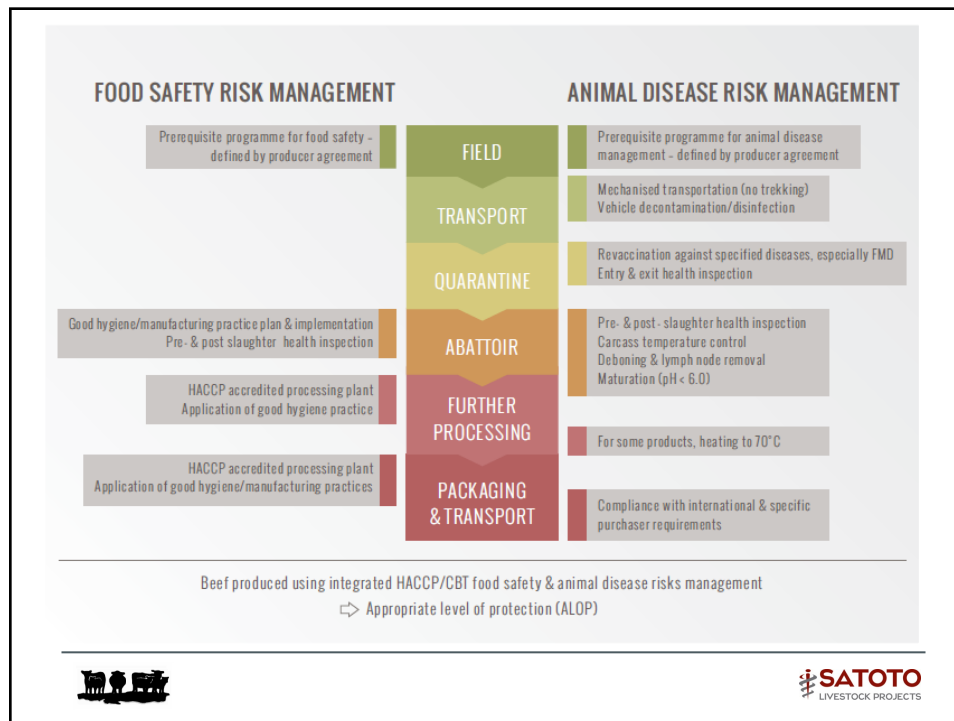
- Human population ~90,0000, Cattle ~140,000
- Exported fresh frozen beef to RSA, DRC, Angola
- Zambezi Region sits at the heart of KAZA
- Buffalo and cross-border cattle movements
- Increased frequency of FMD outbreaks
- Lost RSA market – early 1990s to 2008
- Disruption of livestock marketing
- Prolonged periods no marketing
- Need for business continuity



## The project

- Developing of Export Opportunities for Beef Products from the Zambezi Region
- Led by the Meat Board of Namibia
- Funded by the Livestock Marketing Efficiency Fund of the Millennium Challenge Account Namibia
- Project overview
  - Scientific studies
  - Quantitative risk analysis
  - Capacity building on FMD diagnostics
  - Pilot value chain approach to mitigating FMD risk
  - Elaborating the value chain approach





## Rationale for the protocol

- Biosecurity – managing FMD risk
- Implementing good agricultural practice
- Addressing supply capacity and quality of beef
- Meeting regulatory requirements
  - Compulsory vaccinations
  - Animal movement controls
- Food safety management
- Animal health care programme

**It is a shared responsibility**



## The producer protocol

- Record keeping
- Animal husbandry
- Animal health management
- Grazing and pasture management
- Feeds and mineral supplementation
- Transportation

**It is a shared responsibility**



## Record keeping

- Herd numbers
  - Animals – cattle, sheep, goats, pigs etc.
  - Births, deaths etc.
  - Brought-in, loaned, sold etc.
- Animal identification records
- Movement records – permits etc.
- *Feed and supplementation register*
- *Veterinary drugs and treatment register*

**It is a shared responsibility**



## Biosecurity measures

- Herding
  - Avoid contact of herd with other animals
  - Avoid contact with buffalo
- Overnight kraaling
- Avoid illegal importation of animals

**It is a shared responsibility**



## Animal health

- Official FMD vaccination
- *Vaccination against Brucellosis*
- *Vaccinate against other diseases*
- *Control internal parasites*
- *Control external parasites*
- *Reporting animal disease*



**It is a shared responsibility**

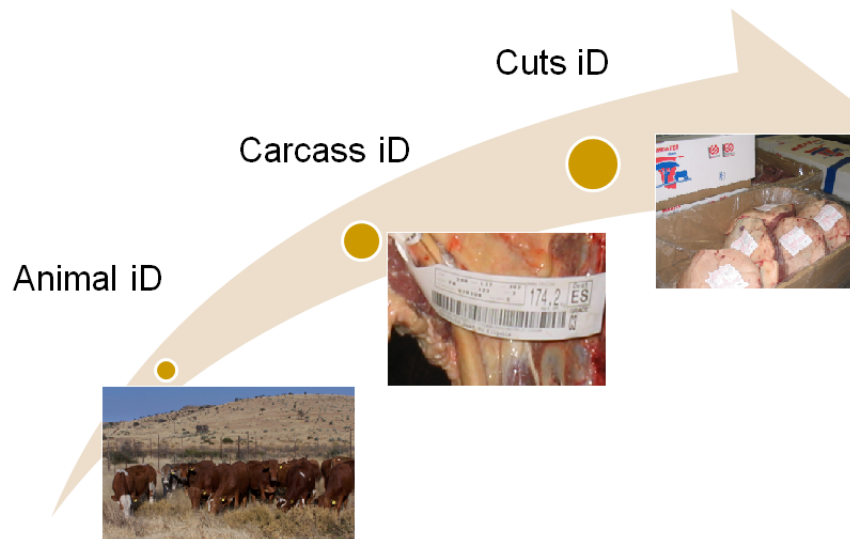


## General animal husbandry

- *Access to water and pasture*
- *Rotational grazing*
- *Feed and mineral supplementation*
- *Avoid prohibited substances*
- *Animal identification and registration*
- *Castration, dehorning and branding*
- *Adherence to withdrawal periods*
- *Animal welfare considerations*



**It is a shared responsibility**



## Transportation

- To quarantine station
  - Tracking on hoof – avoid contact
  - Cleansed and disinfected trucks
- To abattoir
  - ONLY in cleansed and disinfected trucks
- Welfare consideration
  - Resting animals during tracking
  - Livestock trucks
  - Loading facilities

**It is a shared responsibility**



### 1. FREEDOM FROM HUNGER AND THIRST

by ready access to fresh water and diet to maintain health and vigor.

### 2. FREEDOM FROM DISCOMFORT

by providing an appropriate environment including shelter and a comfortable resting area.

### 3. FREEDOM FROM PAIN, INJURY OR DISEASE

by prevention or rapid diagnosis and treatment.

### 4. FREEDOM TO EXPRESS NORMAL BEHAVIOR

by providing sufficient space, proper facilities and company of the animal's own kind.

### 5. FREEDOM FROM FEAR AND DISTRESS

by ensuring conditions and treatment which avoid mental suffering.





## Lessons from Zambezi

- Keep it simple and clear
- Without tangible benefits, adoption is slow
- Progressive implementation
- Raising awareness may require
- Extensive support to producers required
  - Farmer-to-Farmer mentorship program
  - Farmer training required
- Ride on existing regulations
- Compliance monitoring is critical
- **It is a shared responsibility**



# Thank You!

- Alexander Toto –

E-mail: [ask@satotoprojects.com](mailto:ask@satotoprojects.com)

Online: [www.satotoprojects.com](http://www.satotoprojects.com)

