

Livestock, Wildlife and Development

U Ushewokunze-Obatolu
Presented at the SADC Scientific
Session on FMD

Nov. 14, 2012
Gaborone, Botswana

Acknowledgements

- Mr A. Maronge. Director, Rural Authorities Department, Min of Local Government, Urban and Rural Development. Zimbabwe.
- Dr W. Nduku. Chief Executive. Wildlife and Environment Zimbabwe. Harare
- Mr C. Jonga. Director, CAMPFIRE Association. Harare. Zimbabwe
- Mr C. J. Gatora. Alderman. ZILGA
- Dr A. Caron et al. CIRAD-PCP. Zimbabwe
- Dr C. Masterson et al. Wildlife Rhino Trust. Zimbabwe

Wildlife areas of Zimbabwe

- Types
 - National parks as conservation areas
 - Safari hunting areas adjacent to Parks areas
 - Private commercial conservancies
 - CAMPFIRE areas
 - TFCAs
- Determinants
 - Conservation of indigenous breeds and wildlife
 - Legal
 - traditional
 - Recreation

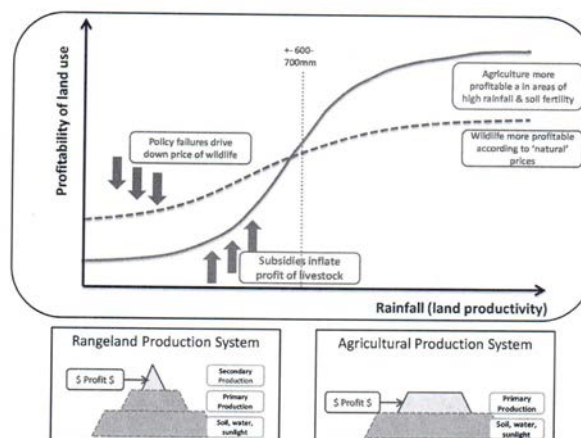
Wildlife areas of Zimbabwe

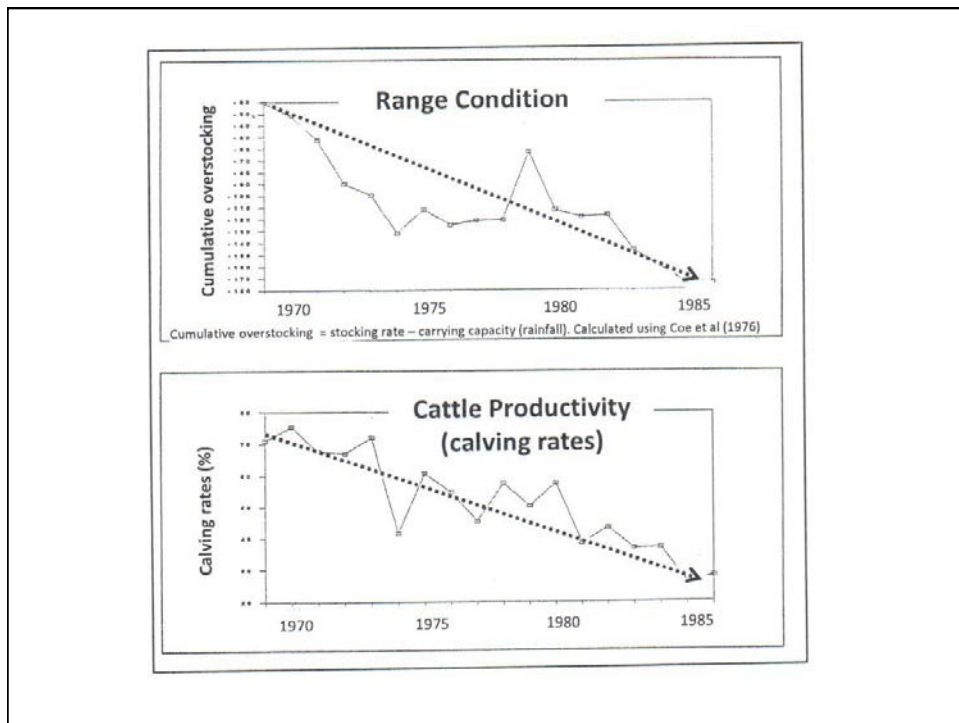
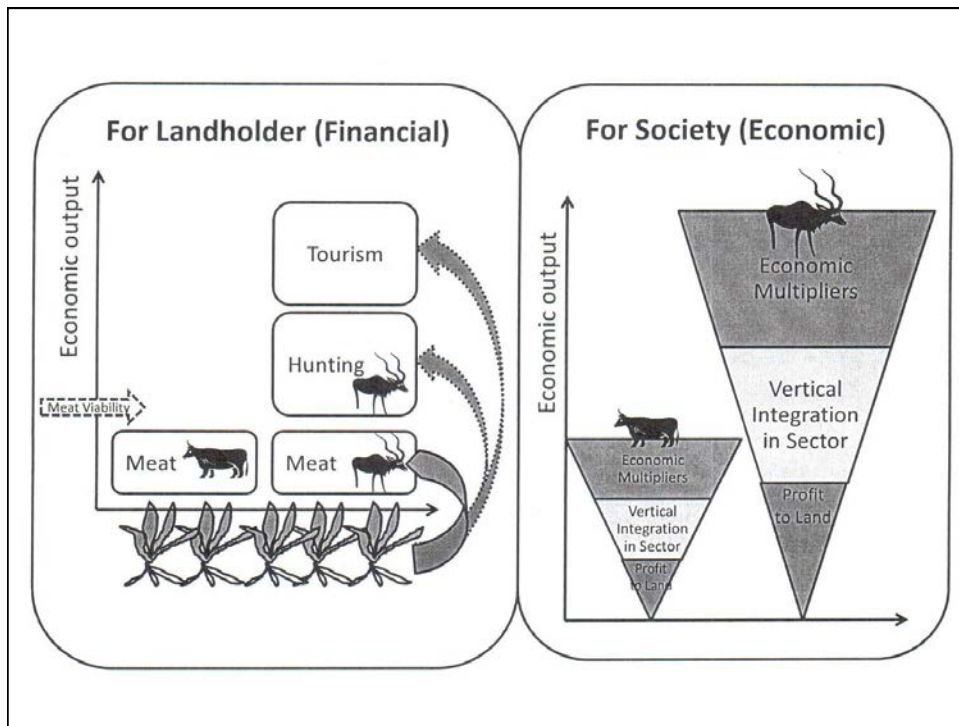
- Commercialisation (Trade, Tourism, recreation)
 - Natural resource utilisation
 - Consumptive
 - Non-consumptive
- Ecological opportunities
 - Sustainable natural resource management
 - Green economy
 - Carbon trade

Agriculture

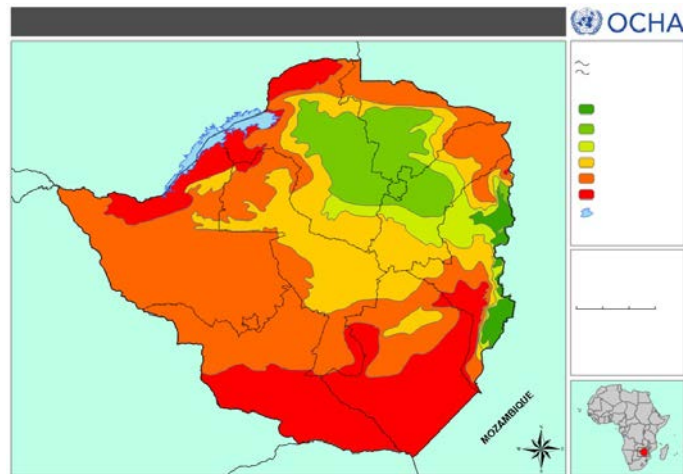
- Livelihoods and social values
- Food & nutritional security
- The economy

Profitability of land use
Source: Child et. al. 2012



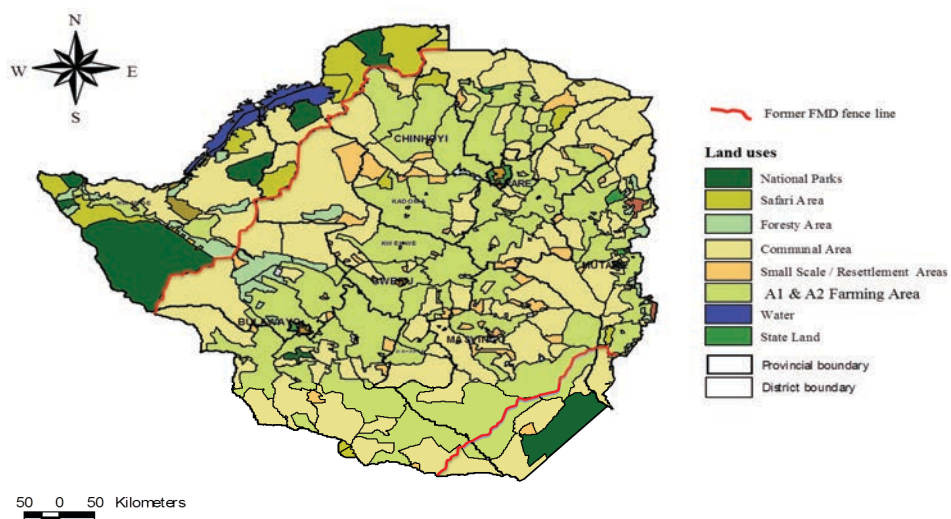


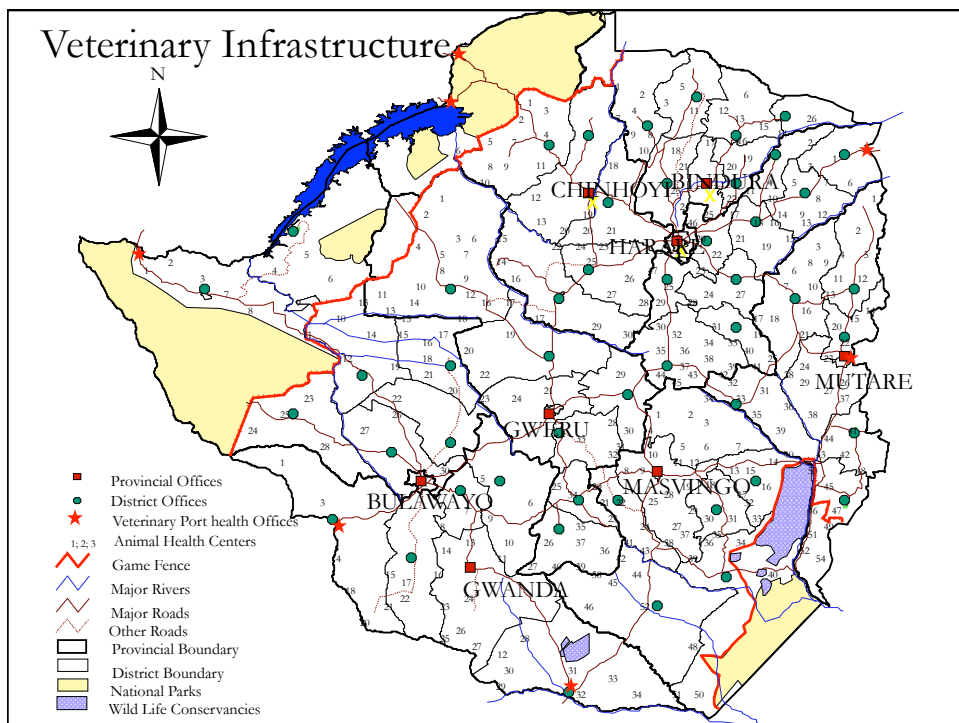
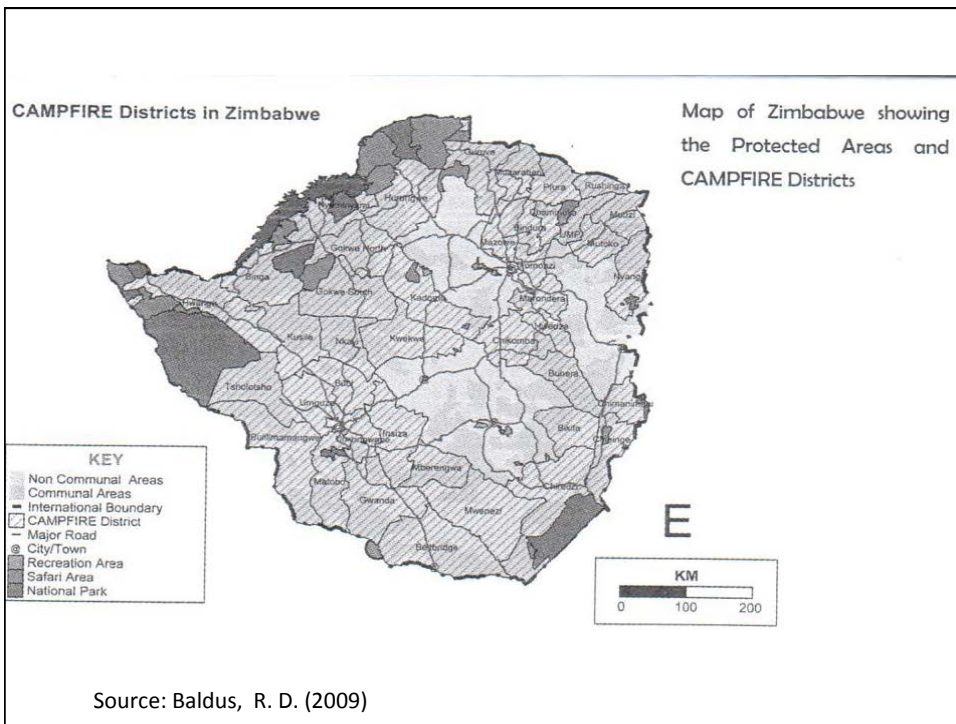
Map of Agro-ecological regions



Land classification

Zimbabwe land use





Nature and basis of conflicts

Aspect	Conflict	Cause
Socio-economic	Land-use	<ul style="list-style-type: none"> • Land tenure • Heterogeneous nature of “communities” & aspirations • Empowerment levels • Disproportionate beneficiation • Aesthetics • Technical and sanitary barriers
	Access to markets	
Political	Interagency dislocation	<ul style="list-style-type: none"> • Land settlement policies • Non holistic policy harmonisation • Wildlife is state property • Need by state to alleviate poverty
	Development resources	

Nature and basis of conflicts

Aspect	Conflict	Cause
Political/economic	Beef vs wildlife ventures	<ul style="list-style-type: none"> • Subsidies in Agriculture, • wealth gradient, • beef prices, • costly investment, • single commodity chain
Ecological	Livestock in marginal areas	<ul style="list-style-type: none"> • Highest numbers conflict with game • Proximity to protected areas • Livestock can overrun wildlife • Fragility of marginal areas vs food security, poverty
	Feed and water resources	

Nature and basis of conflicts

Aspect	Conflict	Cause
Technical	Animal and Public Health	<ul style="list-style-type: none"> • Communicable pests and diseases at interphase • Meeting the high public cost of animal disease surveillance and control
	Intellectual property	<ul style="list-style-type: none"> • Unresolved inter-governmental positions on control of isolates or vaccine strains
	Global warming	<ul style="list-style-type: none"> • Intensified livestock production
Trans - national	TFCAs	<ul style="list-style-type: none"> • Differential risk & investment levels • Expectation to reduce fences and expand wildlife habitat

Proposals to reconcile social, political & economic conflicts

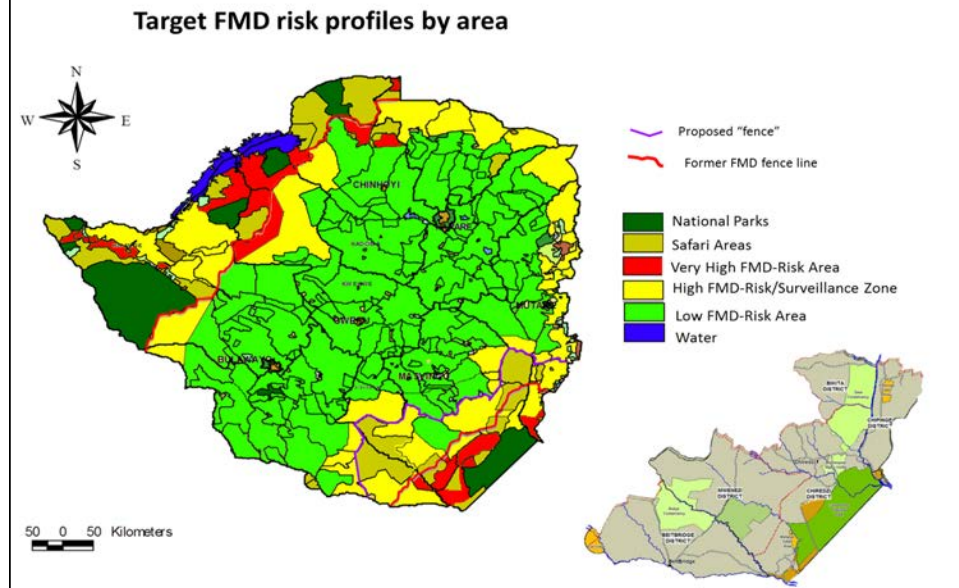
- Harmonisation of policies and programs
 - Common development objectives for Agriculture, Tourism and Conservation for sustainability
 - Grassroots involvement in public policy formulation and implementation for participatory NRM-based development
 - Trans-national, regional harmonisation
 - Domesticate “green strategies” for livestock production
- Economic empowerment of the poor
 - Natural resource-based entrepreneurship
 - Financing and credit
 - Provision of basic public infrastructure
 - Link to employment and income needs
 - Devolve program ownership to the poor
 - Pursue viable market chains

Proposal for mainstreaming the CBT concept

- Pilot project on participatory animal management and health
 - Public awareness/extension
 - Animal production, feeding, identification, surveillance, herd health
 - Infrastructure, disease control, abattoirs, pastures, marketing
 - Business management

A pilot project

FMD Risk Profile



Proposals to reconcile Technical conflicts

- Competitive livestock Production
 - Incentives for Livestock marketing
 - Innovative market-linked supplementary feeding
 - Feedlot schemes
 - Breeding improvement
 - Range management (seasonal water, fire)
 - Localised formal marketing
 - Localised quality assured processing
 - Commodity-based meat production for safety and quality
- Innovative ideas through extension and capacity building

Proposals to reconcile Technical conflicts

- Animal Health incentives
 - Animal health and extension
 - Pest control
 - Participatory disease surveillance
 - Preventive vaccination programs
- Disease control
 - Animal identification and traceability
 - Targeted risk based intensive surveillance
 - Movement control
 - NRM credits for animal health

Proposals to reconcile Technical conflicts

- Vaccination programs
 - Routine risk-based preventive
 - Outbreak control
 - Pathogen molecular epidemiology
 - Vaccine development
- Compatible species selection and tactical separation

Some anticipated development outputs

- Roads, bridges for access
- Transport services
- Reticulated water
- Electrical power
- Schools, hospitals, rural commercial service centres
- Markets and marketing information
- Livestock handling and product processing infrastructure

References

1. Anderson, Jens A. et al (2013). Trans-frontier Conservation areas. People living at the edge. Pub. Routledge. 2 Park Sq. Milton Park, Abingdon, Oxon, OX14 4 RN
2. Baldus, R.D. (2009). A practical summary of experiences after 3 decades of Community – based wildlife conservation in Africa: Lessons Learnt. Pub
3. Child, B et al. (2012). Economics and institutional economics of wildlife on private land in Africa. Pastoralism: Research, Policy and Practice 2: 18. Springer Open.

References

- Murombedzi, J. C. (2003). Pre-colonial and colonial conservation practices in Southern Africa and their legacy today.