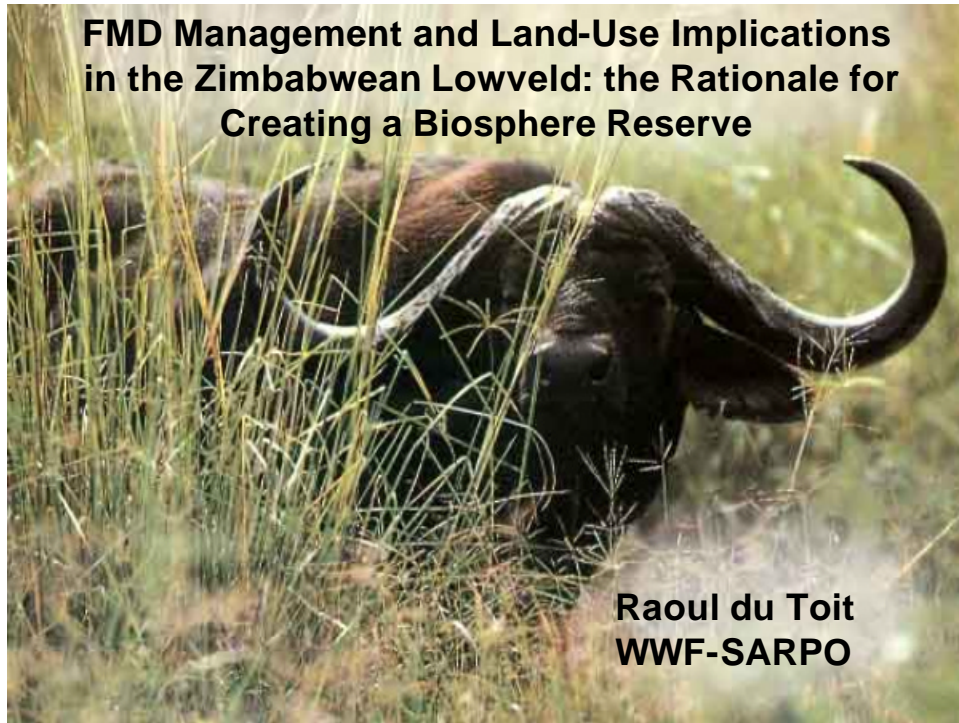
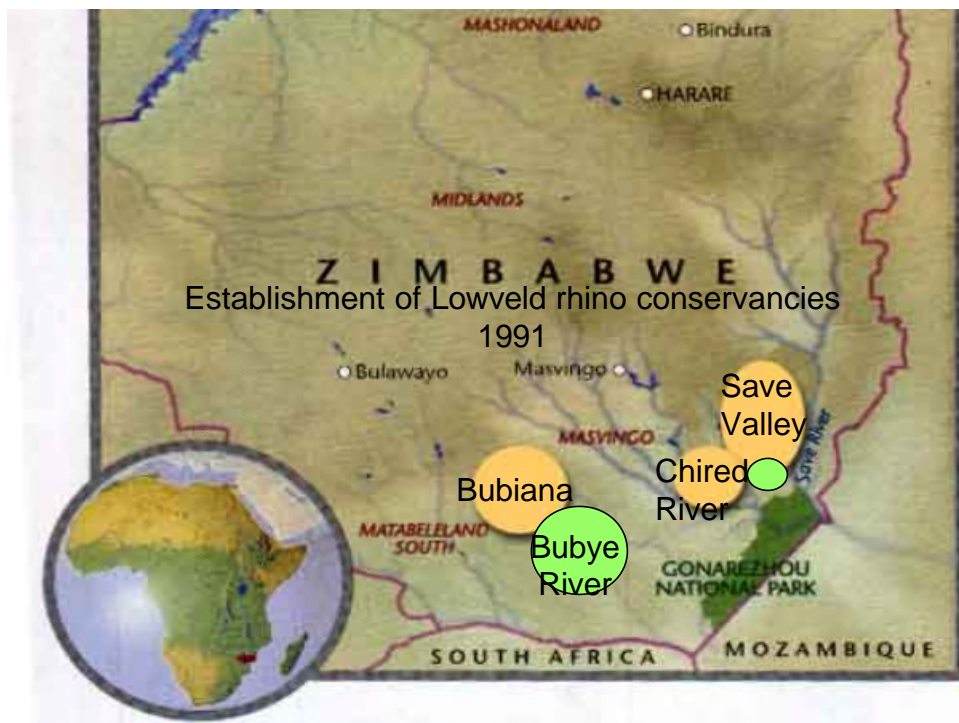
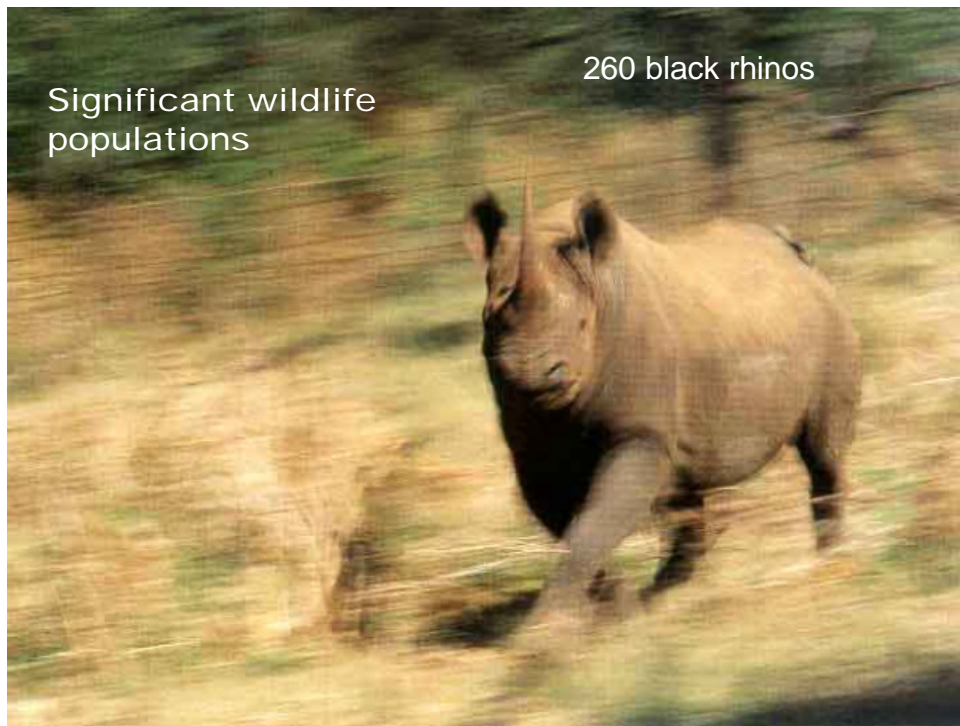


**FMD Management and Land-Use Implications  
in the Zimbabwean Lowveld: the Rationale for  
Creating a Biosphere Reserve**



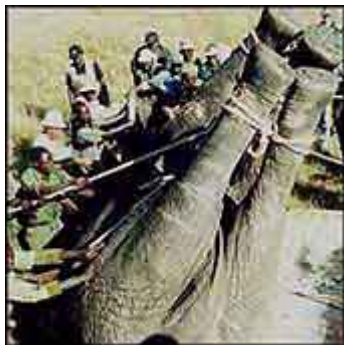
**Raoul du Toit  
WWF-SARPO**





Significant wildlife  
populations

260 black rhinos



Elephant introductions

1993 land-use study

Buffalo introductions





Enclaves for buffalo permitted within double-fences

FMD-free buffalo breeding

Roaming buffalo in Communal Lands - CAMPFIRE



Land invasions - 2000

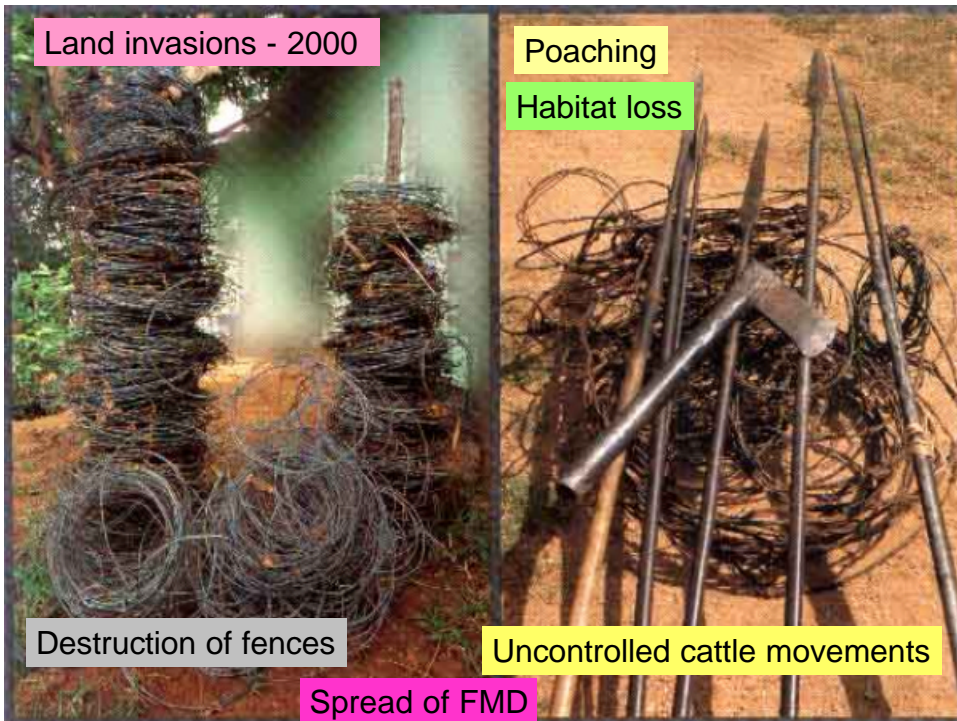
Poaching

Habitat loss

Destruction of fences

Uncontrolled cattle movements

Spread of FMD





High wildlife densities

"Guti" weather

Environmental conditions favouring spread of FMD

What is needed:

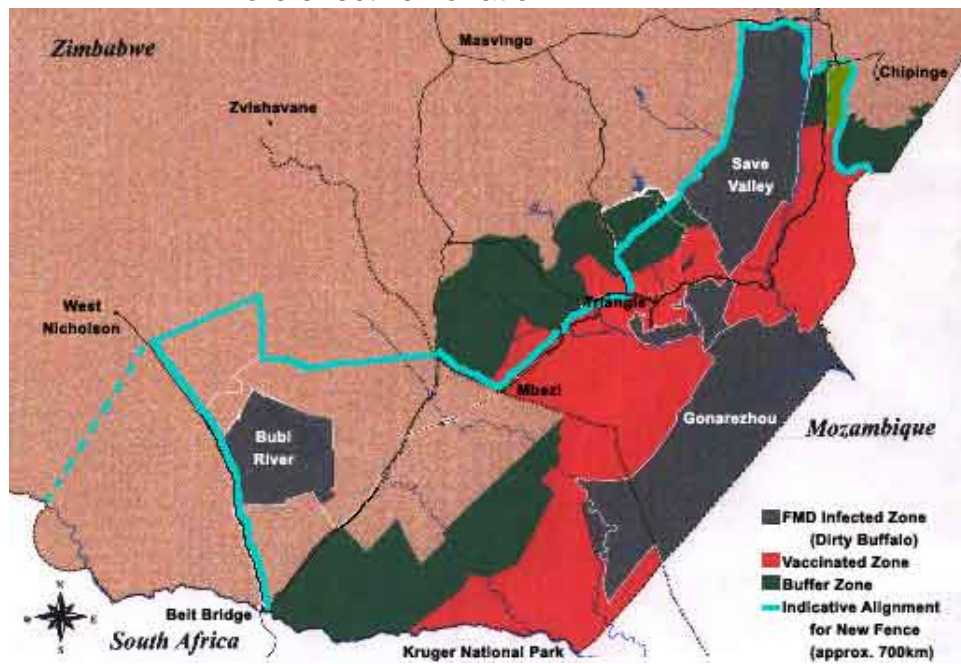
Better coordination between stakeholders  
 Holistic land-use planning/zonation  
 Durable options for land reform  
 More effective control measures for FMD  
 Locally developed agenda for  
 development aid



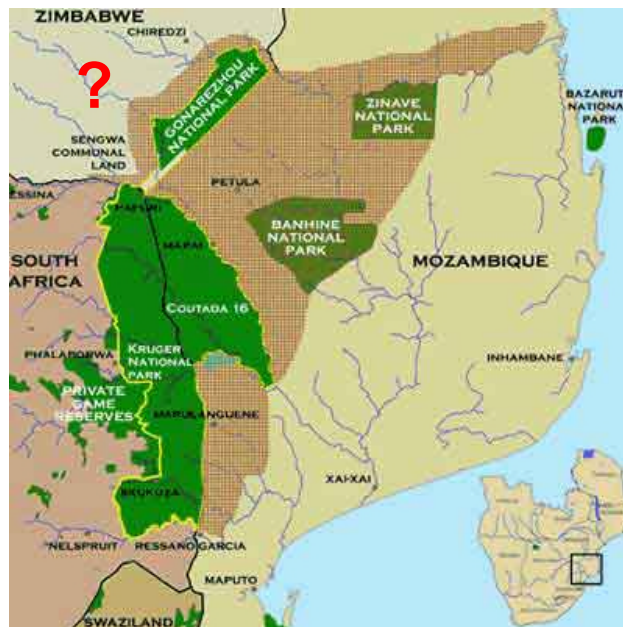
Biosphere Reserve?



### More effective zonation



### TFCA planning





South Africa's  
FMD controls?

Bovine TB?